



Shaping the Future with
Precision Aluminum Extrusions

Strength | Excellence |
Innovation | Sustainability



EXCELLENCE ENGIMAC PRIVATE LIMITED

Inspiring Excellence in the Aluminium World



About Us

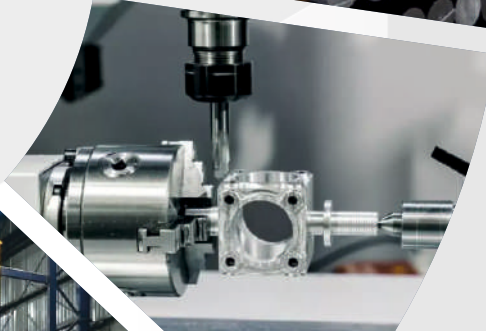
Excellence Engimac Private Limited, operating under the brand name INEX, is one of India's fastest-growing and most trusted aluminum extrusion manufacturers. Headquartered in Bhubaneswar, Odisha, we have established a state-of-the-art, vertically integrated manufacturing unit designed to deliver world-class aluminum solutions.

INEX manufactures a wide range of high-performance aluminum profiles and fabricated components used in construction, electronics, architecture, transportation, and more. From customized extrusions to CNC-based precision parts, we engineer solutions that shape the modern world.



Our Capabilities Include:

- Billet Casting.
- Extrusion with 1150 MT Hydraulic Press.
- CNC Machining & Precision Fabrication.
- Surface Treatment (Anodizing, Powder Coating, PVDF Coating & Wood Grain Finish).
- Shot Blasting Machine.
- Automatic Surface Buffing Machine.
- PV Aluminium Solar Framing Fabrication Machine.
- Assembly & Kitting.



We follow a vertically integrated value chain from billet to finished product with complete in-house control to ensure consistency, flexibility, and unmatched quality.



We Commit to:

Act with Integrity:

With honesty, respect, and accountability.

Safeguard Our Future:

By protecting the health and safety of our people and planet.

Earn Customer Loyalty:

Through best-in-class products and dedicated service.

Drive Operational Excellence:

Using innovation, agility, and people-centric growth.

Ensure Quality:

Via continuous improvements, certifications, and robust control systems.



Why Choose INEX

- ▶ **Advanced Manufacturing Facility:**
Equipped with high-precision CNC machines, hydraulic extrusion presses, modern sawing, and anodizing units.
- ▶ **Certified Excellence:**
ISO 9001:2015 certified with rigorous quality checks at every stage.
- ▶ **Tailored Solutions:**
Custom aluminum profiles and complex fabricated components.
- ▶ **Eco-Friendly Approach:**
Zero waste policy, energy-efficient systems, and green anodizing.
- ▶ **Global Reach:**
Exporting to clients across India, GCC, Europe, and Africa.

Applications We Serve



Construction & Architecture:

Windows, doors, curtain walls, partitions, false ceilings



Transportation

Automotive profiles, cycle frames, transport infrastructure



Electronics & Technology

Enclosures, heat sinks, RF shielding



Industrial Equipment

Machinery frames, racks, greenhouses, turbines

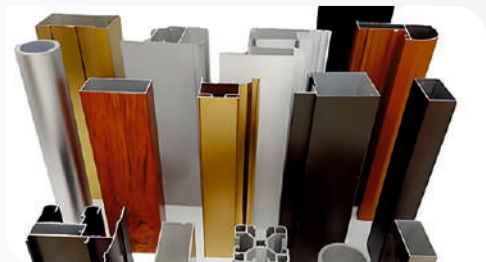


Solar Energy

Aluminium frames and support structures



Core Product Offerings

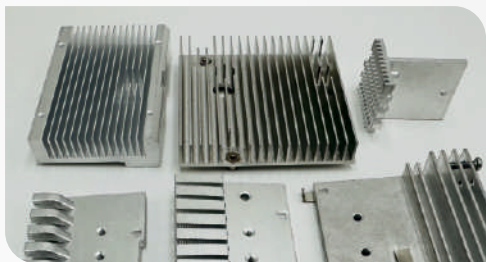
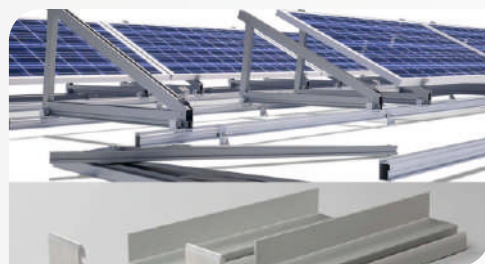


Custom Aluminum Profiles

Built to customer specifications for machine frames, enclosures, partitions, and modular systems. Available in anodized, powder-coated, and mill finishes.

Solar Panel Frames

Lightweight, corrosion-resistant frames suited for rooftop and ground-mounted installations across various environments.

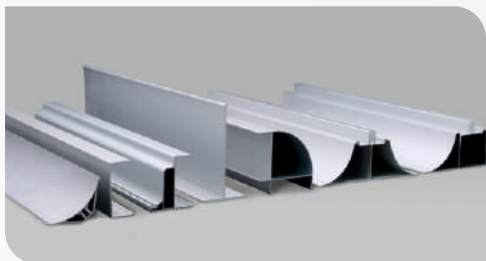


Precision Heat Sinks

Designed for superior heat dissipation in compact electronic devices like LEDs, telecom units, and power converters.

Curtain Wall Profiles

Structurally sound and aesthetically refined profiles for elegant and modern glass facades.



Architectural Aluminum Sections

Used in commercial, residential, and institutional projects with sleek finishes and custom sizes.

Industrial Tubes & Frames

High-strength, corrosion-resistant components for display systems, conveyors, racks, and more.



Manufacturing Standards & Product Specifications

Alloys Used:	India: 63400 America: AA6063 (ASTM B221) UK: HE9 (BS)
Mechanical Properties:	Tensile Strength: 185 MPa Elongation: 7% Hardness: 71–84 Rockwell E
Extrusion Capability:	Solid Profiles: Up to 120 mm CCD Hollow Profiles: Up to 100 mm CCD Lengths: As per customer requirements
Tolerances & Standards:	BS 1474:1987 IS 733 & IS 1285 IS 2673 (Round Tubes) IS 6477 (Hollow Sections) IS 3965 (Solid Sections)
Surface Finishes:	Mill Finish Anodizing (Natural, Black, Bronze, Champagne, Titanium) Powder Coating (Custom Shades) PVDF Coating Wood Grain Finish

Physical Properties of Aluminum

Specific Gravity:	2.70
Electrical Conductivity:	53–62% IACS
Coefficient of Linear Expansion:	22×10^{-6} mm/mm/°C
Thermal Conductivity (20°C):	0.53 cal/cm ² /sec/cm/°C
Electrical Resistivity (20°C):	2.850 micro-ohm (EC-grade)
Modulus of Elasticity:	7×10^5 kg/cm ²

Die Availability

INEX offers a comprehensive catalogue of readily available extrusion dies—allowing faster, economical production without additional die charges. If your required profile is not listed, we welcome custom inquiries and offer full design-to-production support.

Whether you need a standard, off-the-shelf solution or a tailor-made aluminum profile, our team ensures:

- Rapid design turnaround
- Lightweight strength
- Dimensional accuracy
- Excellent corrosion resistance

Sustainability at INEX

We believe manufacturing excellence must be future-ready:

- **Zero Waste Manufacturing:**
100% aluminum scrap recycling
- **Energy-Efficient Operations:**
Reduced emissions and carbon footprint
- **Safe Work Culture:**
Zero-accident priority, employee well-being first
- **Eco-friendly Anodizing:**
Global compliance with minimal environmental impact
- **Water Management:**
Integrated reuse systems
- **Community Engagement:**
Supporting regional growth, skill-building & education



TABLE 1 - Chemical Composition Limits^{A,B,C}

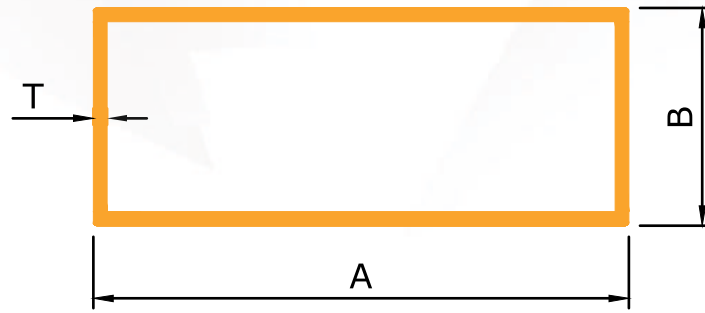
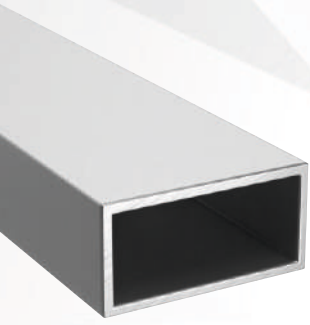
Alloy	Silicon	Iron	Copper	Manga- nese	Magne- sium	Chrom- ium	Zinc	Titanium	Vana- dium	Other Elements ^D Each	Elements ^D Total ^E	Alumi- num
1060	0.25	0.35	0.05	0.03	0.03		0.05	0.03	0.05	0.03		66.90 min ^F
1100		0.95 Si+Fe	0.05-0.20	0.05			0.10			0.05	0.15	99.00 min ^F
2014	0.50-1.2	0.7	3.9-5.0	0.40-1.2	0.20-0.8	0.10	0.25	0.15 ^G		0.05 ^G	0.15	remainder
2024	0.50	0.50	3.8-4.9	0.30-0.9	1.2-1.8	0.10	0.25	0.15 ^G		0.05G	0.15	remainder
2219	0.20	0.30	5.8-6.8	0.20-0.40	0.02		0.10	0.02-0.10	0.05-0.15	0.5H	0.15 ^H	remainder
3003	0.6	0.7	0.05-0.20	1.0-1.5			0.10			0.05	0.15	remainder
Alclad 3003	...		3003 Clad with 7072 alloy									
3004	0.30	0.7	0.25	1.0-1.5	0.8-1.3		0.25			0.05	0.15	remainder
3102	0.40	0.7	0.10	0.05-0.40			0.30	0.10		0.05	0.15	remainder
5052	0.25	0.40	0.10	0.10	2.2-2.8	0.15-0.35	0.10			0.05	0.15	remainder
5083	0.40	0.40	0.10	0.40-1.0	4.0-4.9	0.05-0.25	0.25	0.15		0.05	0.15	remainder
5086	0.40	0.50	0.10	0.20-0.7	3.5-4.5	0.05-0.25	0.25	0.15		0.05	0.15	remainder
5154	0.25	0.40	0.10	0.10	3.1-3.9	0.15-0.35	0.20	0.20		0.05	0.15	remainder
5454	0.25	0.40	0.10	0.50-1.0	2.4-3.0	0.05-0.20	0.25	0.20		0.05	0.15	remainder
5456	0.25	0.40	0.10	0.50-1.0	4.7-5.5	0.05-0.20	0.25	0.20		0.05	0.15	remainder
6005	0.6-0.9	0.35	0.10	0.10	0.40-0.6	0.10	0.10	0.10		0.05	0.15	remainder
6005A	0.50-0.9	0.35	0.30	0.50 ^I	0.40-0.7	0.30 ^I	0.20	0.10		0.05	0.15	remainder
6060	0.30-0.6	0.10-0.30	0.10	0.10	0.35-0.6	0.5	0.15	0.10		0.05	0.15	remainder
6061 ^J	0.40-0.8	0.7	0.15-0.40	0.15	0.8-1.2	0.04-0.35	0.25	0.15		0.05	0.15	remainder
6063	0.20-0.6	0.35	0.10	0.10	0.45-0.9	0.10	0.10	0.10		0.05	0.15	remainder
6066	0.9-1.8	0.50	0.7-1.2	0.6-1.1	0.8-1.4	0.40	0.25	0.20		0.05	0.15	remainder
6070	1.0-1.7	0.50	0.15-0.40	0.40-1.0	0.50-1.2	0.10	0.25	0.15		0.05	0.15	remainder
6082	0.7-1.3	0.50	0.10	0.10-1.0	0.6-1.2	0.25	0.20	0.10		0.05	0.15	remainder
6105	0.6-1.0	0.35	0.10	0.15	0.45-0.8	0.10	0.10	0.10		0.05	0.15	remainder
6162	0.40-0.8	0.50	0.20	0.10	0.7-1.1	0.10	0.25	0.10		0.05	0.15	remainder
6262	0.40-0.8	0.7	0.15-0.40	0.15	0.8-1.2	0.04-0.14	0.25	0.15		0.05 ^K	0.15 ^K	remainder
6351	0.7-1.3	0.50	0.10	0.40-0.8	0.40-0.8		0.20	0.20		0.05	0.15	remainder
6463	0.20-0.6	0.15	0.20	0.05	0.45-0.9		0.05			0.05	0.15	remainder
6560	0.30-0.7	0.10-0.30	0.5-0.20	0.20	0.20-0.6	0.05	0.15	0.10		0.05	0.15	remainder
7005	0.35	0.40	0.10	0.20-0.7	1.0-1.8	0.06-0.20	4.0-5.0	0.01-0.06		0.05 ^L	0.15 ^L	remainder
7072 ^M		0.7 Si+Fe	0.10	0.10	0.10		0.8-1.3					remainder
7075	0.40	0.50	1.2-2.0	0.30	2.1-2.9	0.10-0.28	5.1-6.1	0.20 ^N		0.05 ^N	0.15	remainder
7116	0.15	0.30	0.50-1.1	0.05	0.8-1.4		4.2-5.2	0.05	0.05	0.05 ^O	0.15	remainder
7129	0.15	0.30	0.50-0.9	0.10	1.3-2.0	0.10	4.2-5.2	0.05	0.05	0.05 ^O	0.15	remainder
7178	0.40	0.50	1.6-2.4	0.30	2.4-3.1	0.18-0.28	6.3-7.3	0.20		0.05	0.15	remainder

^ALimits are in weight percent maximum unless shown as a range or stated otherwise.

^BAnalysis shall be made for the elements for which limits are shown in this table.

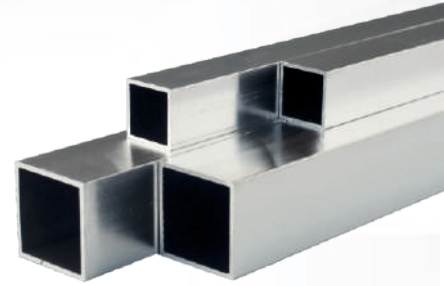
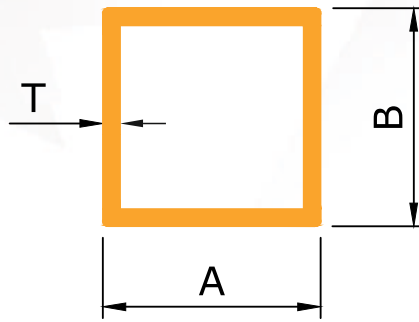
^CFor the purpose of determining conformance to these limits, an observed value or a calculated value obtained from analysis shall be rounded to the nearest unit in the last right-hand place of the figures used in expressing the specified limit, in accordance with the rounding-off method of practice E29

RECTANGULAR TUBE



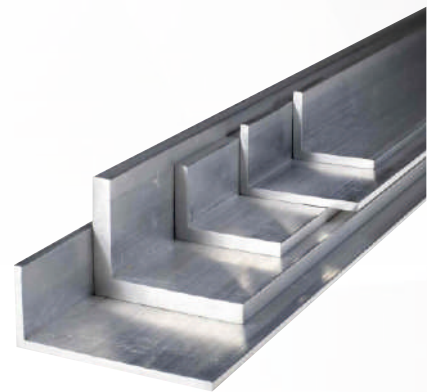
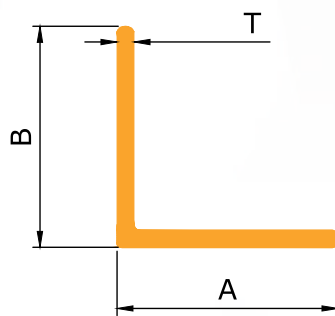
Sec No.	C/L	A	B	T	WT.RANGE KGs/12'
X101	12.00	36.0	24.0	0.80	0.90-1.00
X102	12.00	36.0	24.0	1.00	1.10-1.30
X103	12.00	36.0	24.0	1.20	1.40-1.50
X104	12.00	36.0	24.0	1.50	1.70-1.90
X105	12.00	48.0	24.0	0.80	0.80-0.90
X106	12.00	48.0	24.0	0.90	1.00-1.20
X107	12.00	48.0	24.0	1.20	1.50-1.70
X108	12.00	48.0	24.0	1.50	2.00-2.20
X109	12.00	63.0	38.0	0.80	1.30-1.50
X110	12.00	63.0	38.0	0.95	1.80-2.00
X111	12.00	63.0	38.0	1.20	2.40-2.60
X112	12.00	63.0	38.0	1.50	2.80-3.00
X113	12.00	63.0	38.0	2.00	3.80-4.00
X114	12.00	63.0	38.0	3.00	5.80-6.00
X115	12.00	75.0	25.0	0.80	1.40-1.60
X116	12.00	75.0	25.0	1.00	1.90-2.10
X117	12.00	75.0	25.0	1.20	2.40-2.60
X118	12.00	75.0	25.0	1.50	2.80-3.00
X119	12.00	75.0	25.0	2.00	3.80-4.00
X120	12.00	100.0	25.0	0.90	2.10-2.40
X121	12.00	100.0	25.0	1.00	2.40-2.60
X122	12.00	100.0	25.0	1.20	2.80-3.00
X123	12.00	100.0	25.0	1.50	3.80-4.00
X124	12.00	100.0	44.0	1.30	3.70-3.90
X125	12.00	100.0	44.0	1.50	4.00-4.30
X126	12.00	150.0	50.0	2.00	7.80-7.900

SQUARE TUBE



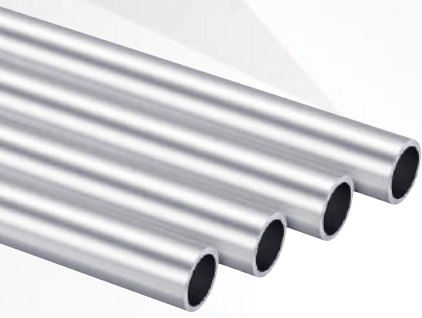
Sec No.	C/L	A	B	T	WT.RANGE KGs/12'
X140	12.00	24.0	24.0	1.00	0.90-1.00
X141	12.00	24.0	24.0	1.20	1.10-1.20
X142	12.00	24.0	24.0	1.50	1.30-1.50
X143	12.00	38.0	38.0	0.80	1.50-1.60
X144	12.00	38.0	38.0	1.20	1.80-2.00
X145	12.00	38.0	38.0	1.50	2.20-2.40
X146	12.00	50.0	50.0	0.95	1.80-2.00
X147	12.00	50.0	50.0	1.20	2.40-2.60
X148	12.00	50.0	50.0	1.50	2.80-3.00
X149	12.00	20.0	20.0	2.00	1.45-1.500

ANGLES

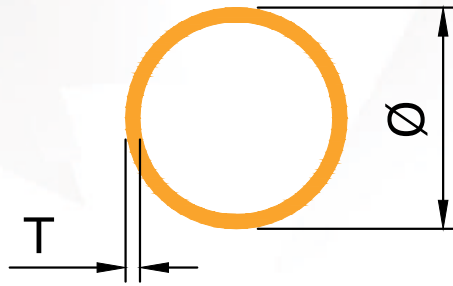


Sec No.	C/L	A	B	T	WT.RANGE KGs/12'
X171	12.00	25.0	25.0	0.90	0.40-0.45
X172	12.00	25.0	25.0	2.00	0.95-1.00
X173	12.00	38.0	25.0	2.00	1.40-1.60
X174	12.00	38.0	25.0	3.00	1.80-2.00
X175	12.00	38.0	38.0	2.00	2.10-2.12
X176	12.00	50.0	50.0	2.00	1.85-1.97

Architectural Section



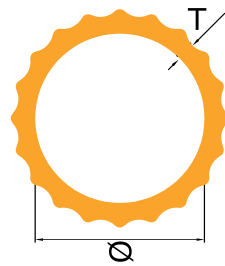
ROUND TUBE



Standard Profile

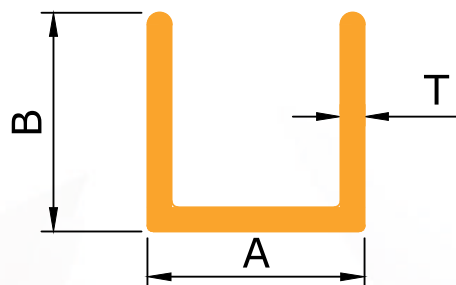
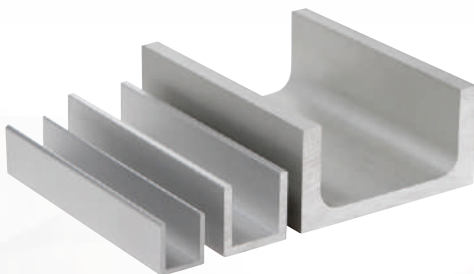
Sec No.	C/L	ØA	T	WT.RANGE KGs/12'
X180	12.00	19.0	1.3	0.68
X181	12.00	14.00	1.1	0.45
X182	12.00	28.00	1.6	1.32
X183	12.00	25.00	2.0	1.38
X184	12.00	50.00	2.0	2.98

FLUTED ROUND PIPE



Sec No.	C/L	ØA	T	WT.RANGE KGs/12'
X185	12.00	25.00	2.00	1.2
X186	12.00	25.00	3.00	1.8

U CHANNEL

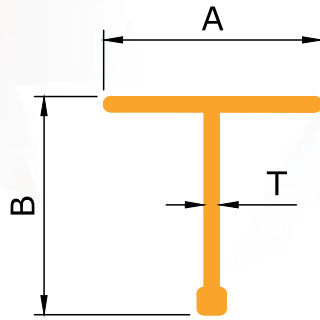


Sec No.	C/L	A	B	T	WT.RANGE KGs/12'
X190	12.00	9.00	9.00	0.60	0.15-0.19
X191	12.00	12.00	12.00	0.70	0.20-0.25
X192	12.00	18.00	11.00	0.6	1.80-1.90

Architectural Section

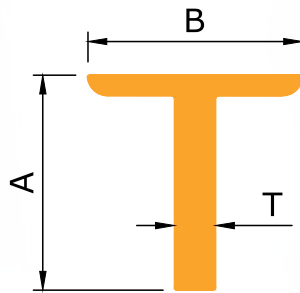
Standard Profile

BULB TEE



Sec No.	C/L	A	B	T	WT.RANGE KGs/12'
X200	12.00	25.00	25.00	0.90	0.40-0.50

PLANE TEE



Sec No.	C/L	A	B	T	WT.RANGE KGs/12'
X205	12.00	25.00	25.00	0.90	0.40-0.50

DOUBLE GLASS CHANNEL



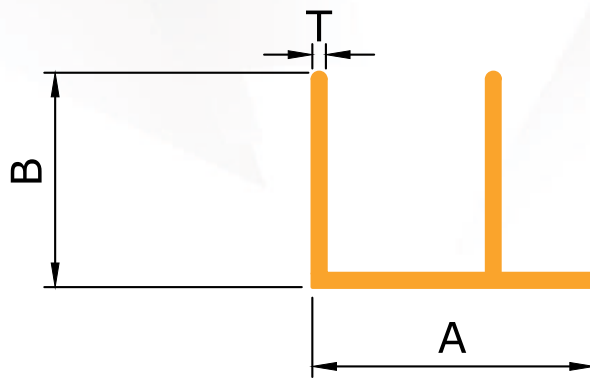
Sec No.	C/L	A	B	T	WT.RANGE KGs/12'
X210	12.00	22.00	11.00	0.60	0.30-0.40
X211	12.00	22.00	11.00	0.90	0.40-0.50
X212	12.00	22.00	11.00	1.00	0.50-0.60
X213	12.00	25.00	11.00	0.70	0.40-0.50
X214	12.00	25.00	11.00	0.90	0.50-0.55
X215	12.00	25.00	11.00	1.15	0.60-0.70
X216	12.00	25.00	11.00	1.20	0.70-0.80

Architectural Section

Standard Profile

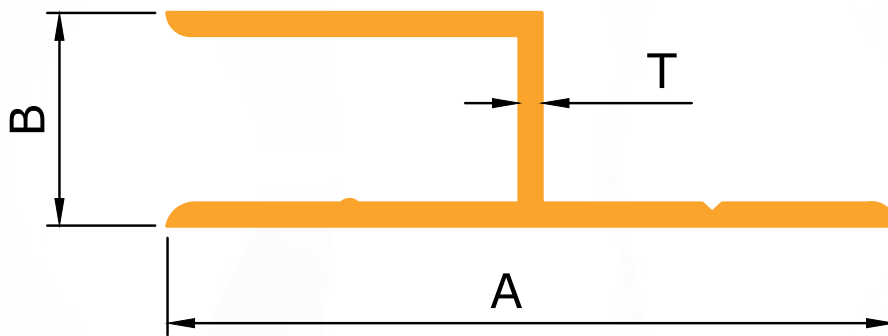


F SECTION

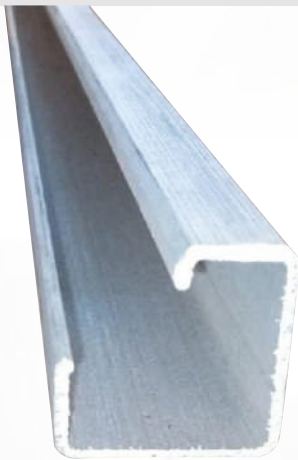


Sec No.	C/L	A	B	T	WT.RANGE KGs/12'
X200	12.00	21.00	16.00	1.00	0.45-0.55

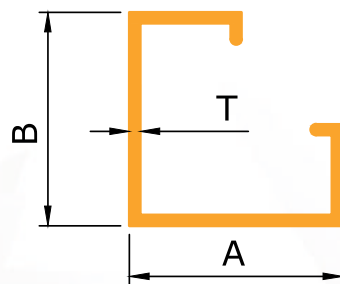
Y SECTION



Sec No.	C/L	A	B	T	WT.RANGE KGs/12'
X225	12.00	33.00	12.70	0.80	0.45-0.55

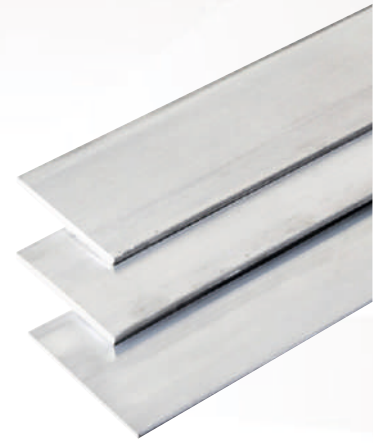
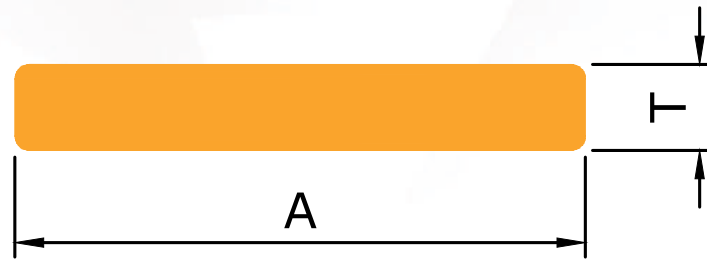


G SECTION



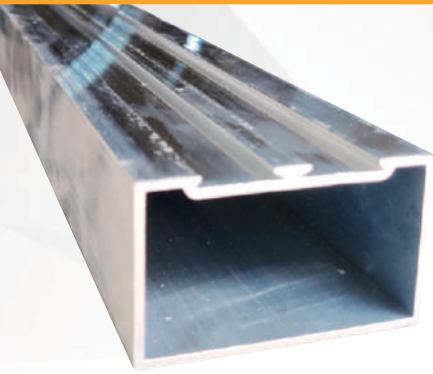
Sec No.	C/L	A	B	T	WT.RANGE KGs/12'
X230	12.00	40.00	20.00	1.75	2.00-2.20
X231	12.00	40.00	2.00	2.00	2.30-2.50

FLAT BAR

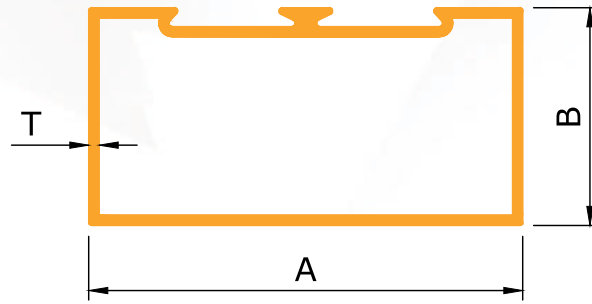


Sec No.	C/L	A	T	WT.RANGE KGs/12'
X240	12.00	25.00	1.70	0.40-0.50
X241	12.00	25.00	3.00	0.75-0.95
X242	12.00	25.00	6.00	1.40-1.60
X243	12.00	25.00	10.00	2.40-2.60
X244	12.00	30.00	10.00	2.90-3.10
X245	12.00	30.00	20.00	6.00-6.20
X246	12.00	40.00	6.00	2.30-2.50
X247	12.00	40.00	10.00	3.90-4.10
X248	12.00	50.00	2.00	1.00-1.20
X249	12.00	50.00	6.00	3.00-3.20
X250	12.00	50.00	10.00	4.90-5.10
X251	12.00	50.00	12.00	5.90-6.10
X252	12.00	60.00	10.00	5.90-6.10
X253	12.00	70.00	10.00	6.90-7.10
X254	12.00	75.00	10.00	7.40-7.60
X255	12.00	75.00	12.00	8.90-9.10
X256	12.00	80.00	10.00	7.90-8.10
X257	12.00	100.00	10.00	9.90-10.10
X258	12.00	100.00	12.00	11.90-12.10
X259	12.00	100.00	20.00	19.80-20.00
X260	12.00	120.00	10.00	11.90-12.10
X261	12.00	150.00	10.00	14.80-15.00
X262	12.00	150.00	12.00	17.80-18.00

Architectural Section



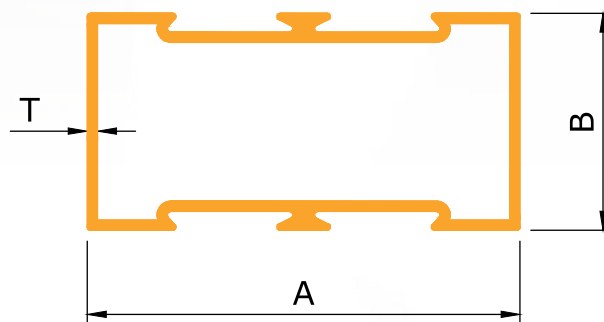
SINGLE PARTITION



Partition Profile

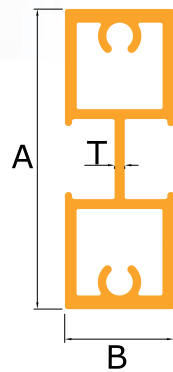
Sec No.	C/L	A	B	T	WT.RANGE KGs/12'
X270	12.00	50.00	24.00	0.80	1.25-1.45
X271	12.00	50.00	24.00	1.00	1.50-1.70
X272	12.00	50.00	24.00	1.20	1.90-2.10
X273	12.00	50.00	24.00	1.50	2.10-2.30
X274	12.00	63.00	38.00	0.90	1.80-2.00
X275	12.00	63.00	38.00	1.00	2.10-2.20
X276	12.00	63.00	38.00	1.20	2.50-2.70
X277	12.00	63.00	38.00	1.50	2.90-3.10
X278	12.00	101.00	44.45	1.20	3.80-4.00
X279	12.00	101.00	44.45	1.50	4.60-4.80

DOUBLE PARTITION



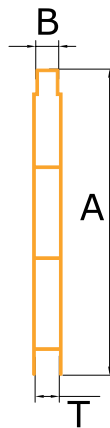
Sec No.	C/L	A	B	T	WT.RANGE KGs/12'
X290	12.00	63.00	38.00	0.90	1.80-2.00
X291	12.00	63.00	38.00	1.00	2.10-2.30
X292	12.00	63.00	38.00	1.20	2.50-2.70
X293	12.00	63.00	38.00	1.50	2.90-3.10
X294	12.00	101.00	44.45	1.20	3.80-4.00
X295	12.00	101.00	44.45	1.50	4.60-4.80

SLIM DOUBLE



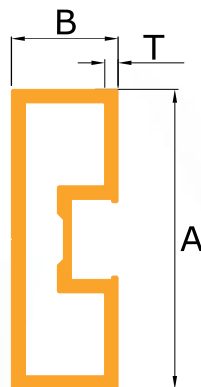
Sec No.	C/L	A	B	T	WT.RANGE KGs/12'
EX SL 110	12.00	45.00	16.00	2.00	2.77

ACP PROFILE



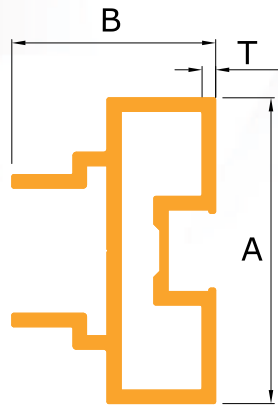
Sec No.	C/L	A	B	T	WT.RANGE KGs/12'
EX SL 105	12.00	100.00	9.6	0.8	2.06

SLIM SINGLE



Sec No.	C/L	A	B	T	WT.RANGE KGs/12'
EX SL 110	12.00	45.00	16.00	2.00	2.77

SLIM SLIDING

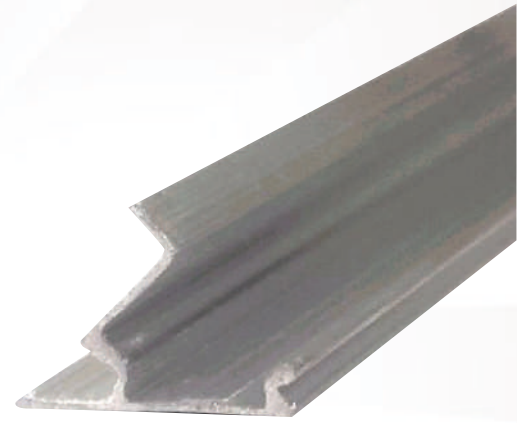
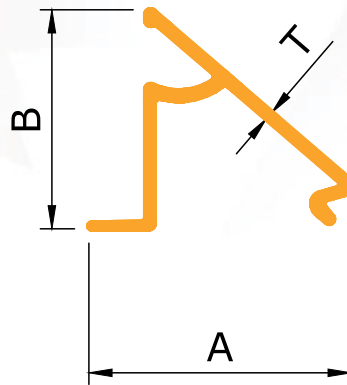


Sec No.	C/L	A	B	T	WT.RANGE KGs/12'
EX SL 115	12.00	45.00	16.00	2.00	3.62

Architectural Section

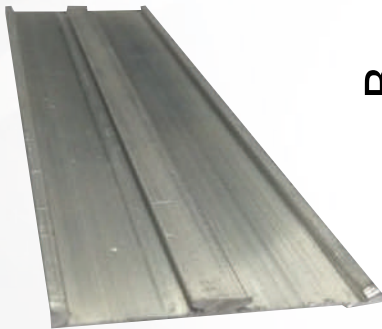
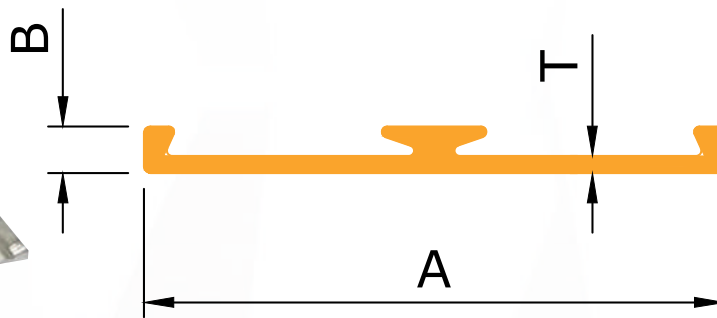
Partition Profile

GLAZING CLIP



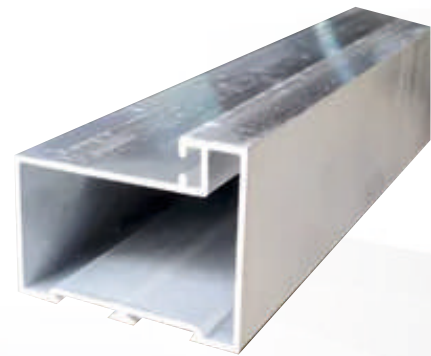
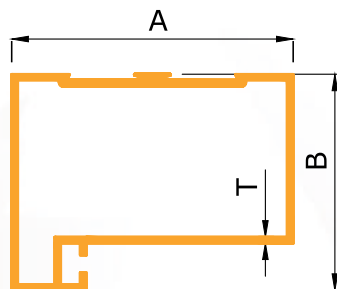
Sec No.	C/L	A	B	T	WT.RANGE KGs/12'
X300	12.00	19.00	17.00	0.45	0.20-0.22
X301	12.00	19.00	17.00	0.50	0.24-0.28
X302	12.00	19.00	17.00	0.70	0.30-0.35

GLAZING PLATE



Sec No.	C/L	A	B	T	WT.RANGE KGs/12'
X305	12.00	44.00	3.70	0.60	0.50-0.55
X306	12.00	44.00	3.70	0.90	0.55-0.60

LEG PARTITION

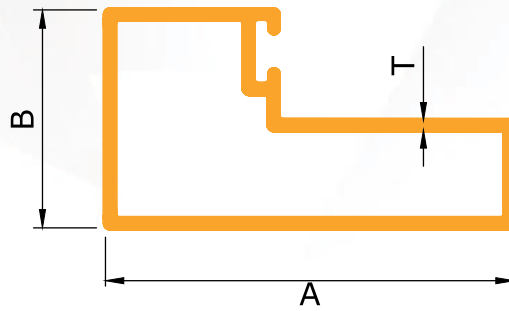


Sec No.	C/L	A	B	T	WT.RANGE KGs/12'
X305	12.00	44.00	3.70	0.60	0.50-0.55
X306	12.00	44.00	3.70	0.90	0.55-0.60

Architectural Section



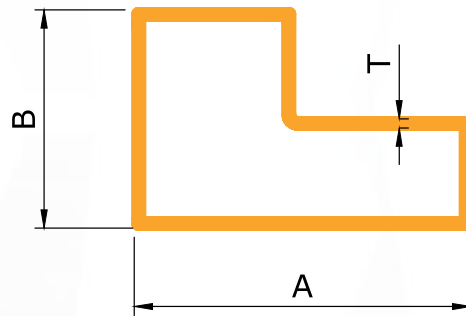
L PIPE WITH GROOVE



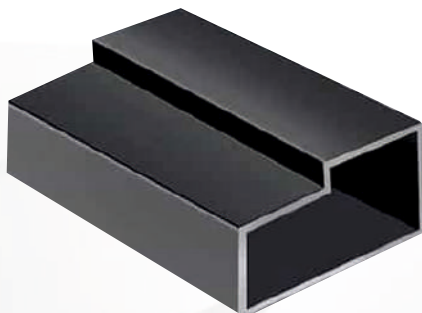
Sec No.	C/L	A	B	T	WT.RANGE KGs/12'
X320	12.00	63.50	38.10	1.60	4.00-4.20
X321	12.00	45.00	24.00	0.70	1.00-1.20
X322	12.00	45.00	24.00	1.00	1.30-1.50
X323	12.00	45.00	24.00	1.20	1.60-1.80

Chokhat Profile

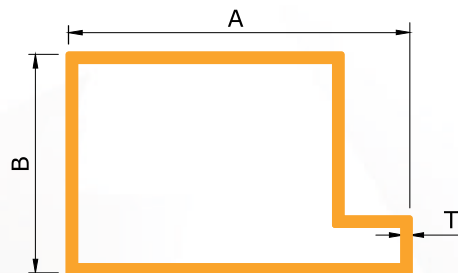
L PIPE WITHOUT GROOVE



Sec No.	C/L	A	B	T	WT.RANGE KGs/12'
X330	12.00	37.00	24.30	0.80	0.90-1.10
X331	12.00	37.00	24.30	0.90	1.20-1.40
X332	12.00	37.00	24.30	1.00	1.50-1.70

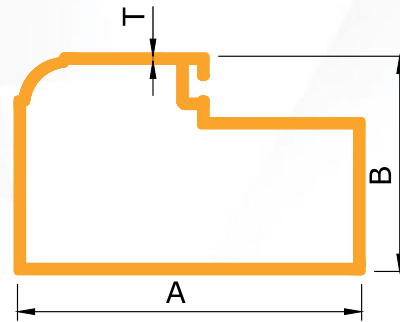


50X32 CHOKHAT



Sec No.	C/L	A	B	T	WT.RANGE KGs/12'
X340	12.00	50.00	32.00	0.90	1.40-1.60
X341	12.00	50.00	32.00	1.10	1.70-1.90

MOULDING CHOKHAT

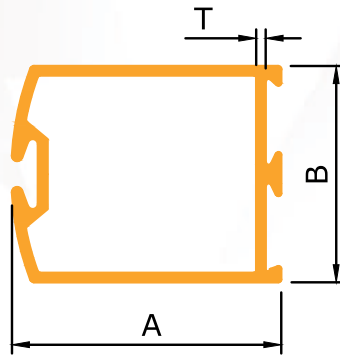


Sec No.	C/L	A	B	T	WT.RANGE KGs/12'
X350	12.00	63.50	38.10	0.90	1.90-2.10
X351	12.00	63.50	38.10	1.20	2.40-2.60
X352	12.00	63.50	38.10	1.50	3.00-3.20
X353	12.00	50.00	25.00	0.9	1.3

Architectural Section

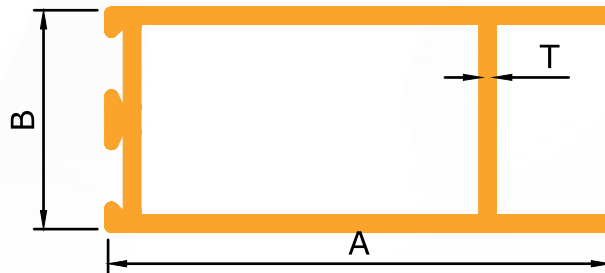
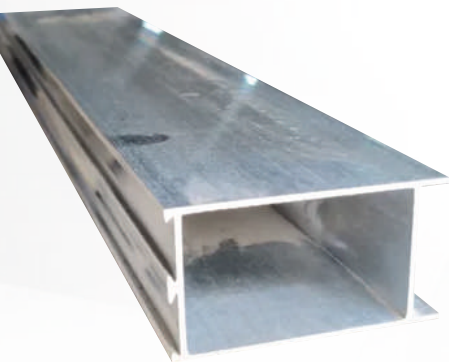
Door Profile

DOOR VERTICAL



Sec No.	C/L	A	B	T	WT.RANGE KGs/12'
X360	12.00	47.50	44.45	1.00	2.00-2.30
X361	12.00	47.50	44.45	1.20	2.60-2.80
X362	12.00	47.50	44.45	1.50	2.80-3.10
X365	12.00	83.50	44.50	1.50	3.70-4.50
X366	12.00	83.50	44.50	2.00	5.10-5.30

DOOR TOP & BOTTOM

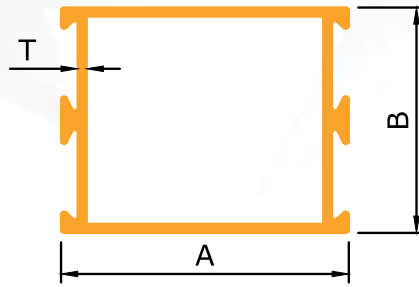
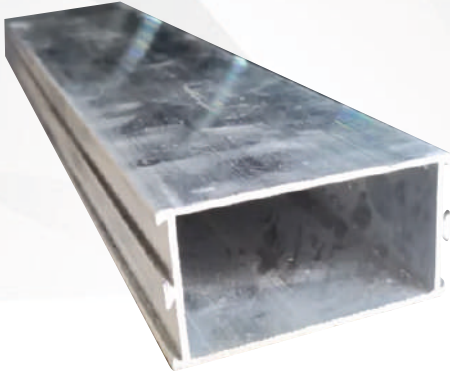


Sec No.	C/L	A	B	T	WT.RANGE KGs/12'
X370	12.00	47.50	44.45	1.00	2.00-2.20
X371	12.00	47.50	44.45	1.20	2.40-2.60
X372	12.00	47.50	44.45	1.50	2.80-3.00
X375	12.00	83.05	44.45	1.50	3.80-4.20
X376	12.00	83.05	44.45	2.00	5.00-5.20
X380	12.00	114.00	44.45	1.10	3.50-3.80
X381	12.00	114.00	44.45	1.20	3.90-4.10
X382	12.00	114.00	44.45	1.50	4.80-5.00

Architectural Section

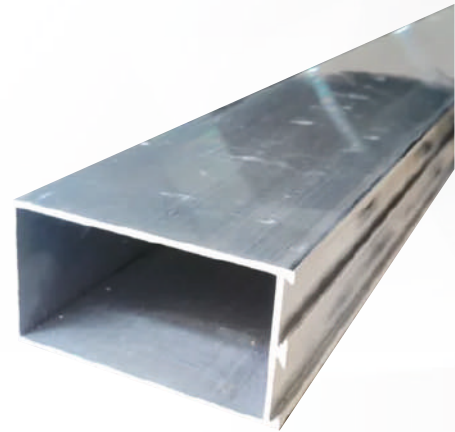
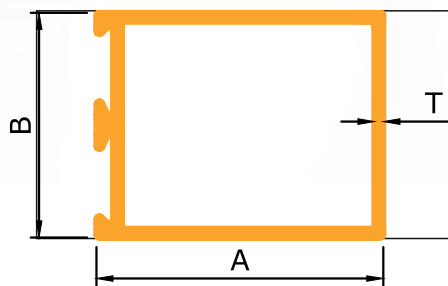
Door Profile

DOOR MIDDLE DOUBLE



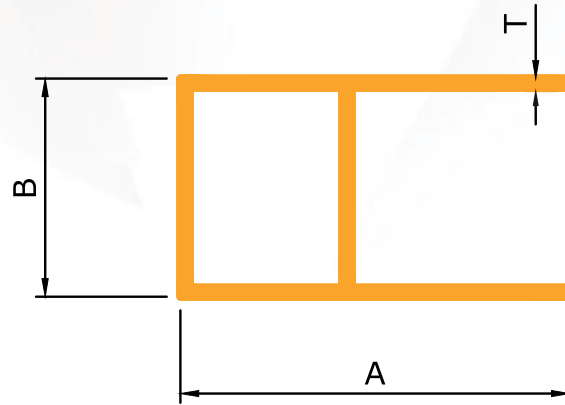
Sec No.	C/L	A	B	T	WT.RANGE KGs/12'
X390	12.00	47.00	44.00	1.00	2.00-2.30
X391	12.00	47.00	44.00	1.20	2.50-2.70
X392	12.00	47.00	44.00	1.50	3.00-3.20
X395	12.00	83.05	44.45	1.50	3.70-4.00
X396	12.00	83.05	44.45	2.00	5.20-5.50

DOOR MIDDLE SINGLE



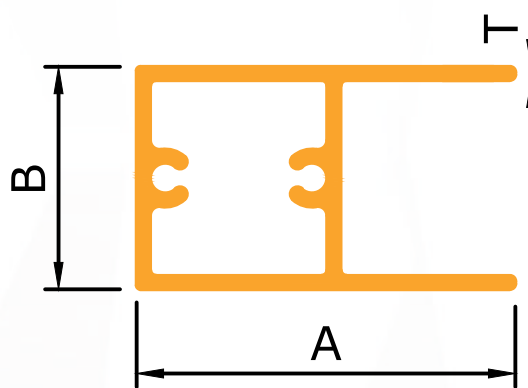
Sec No.	C/L	A	B	T	WT.RANGE KGs/12'
X400	12.00	47.00	44.00	1.00	1.80-2.10
X401	12.00	47.00	44.00	1.20	2.50-2.70
X402	12.00	47.00	44.00	1.50	3.00-3.20
X405	12.00	83.05	44.45	1.50	3.70-4.00
X406	12.00	83.05	44.45	2.00	5.20-5.50

SYNTEX A WITHOUT GROOVE



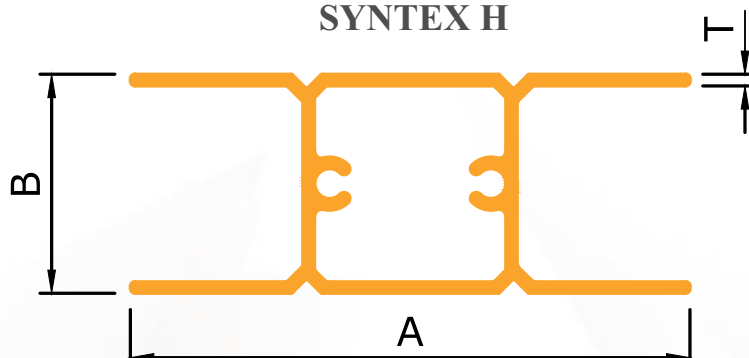
Sec No.	C/L	A	B	T	WT.RANGE KGs/12'
X410	12.00	40.00	24.00	0.60	0.70-0.90
X411	12.00	40.00	24.00	0.60	1.00-1.20

SYNTEX A WITH GROOVE



Sec No.	C/L	A	B	T	WT.RANGE KGs/12'
X415	12.00	40.00	24.00	0.70	0.90-1.20
X416	12.00	40.00	24.00	1.20	1.50-1.70

SYNTEX H

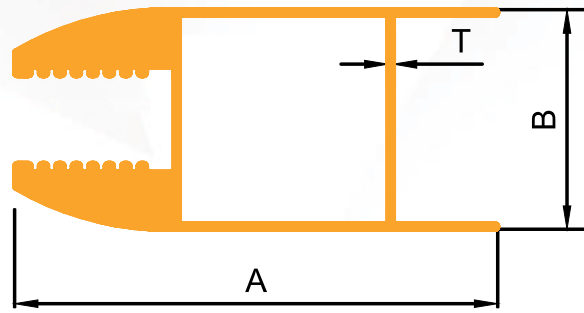


Sec No.	C/L	A	B	T	WT.RANGE KGs/12'
X420	12.00	40.00	24.00	0.80	1.10-1.30
X421	12.00	40.00	24.00	1.20	1.50-1.700

Architectural Section

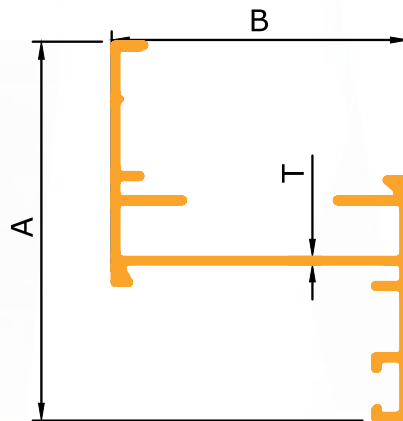
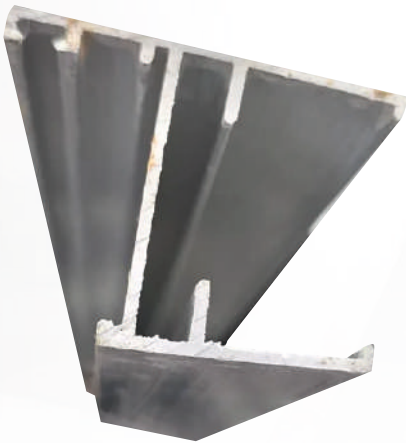
Door Profile

JUMBO SECTION



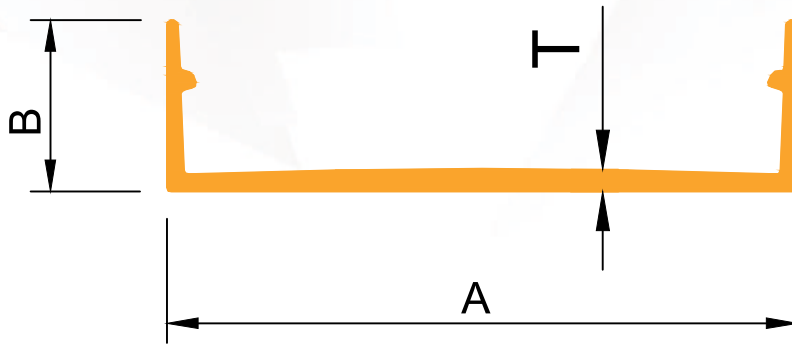
Sec No.	C/L	A	B	T	WT.RANGE KGs/12'
X425	12.00	88.00	40.00	2.00	8.00-8.500
X426	12.00	88.00	40.00	2.50	9.500-10.00

Z OUTER (34 MM)

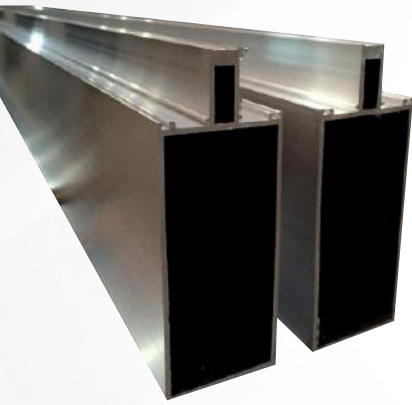


Sec No.	C/L	A	B	T	WT.RANGE KGs/12'
X430	12.00	45.00	35.00	0.90	1.300-1.500
X431	12.00	45.00	35.00	1.20	1.600-1.800

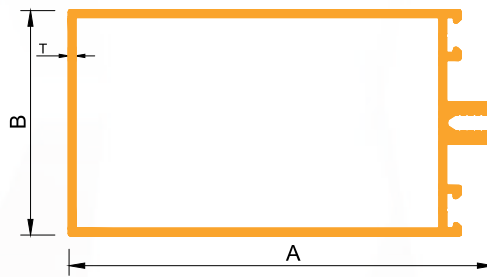
CURTAIN WALL COVER PLATE



Sec No.	C/L	A	B	T	WT.RANGE KGs/12'
P100	12.00	55.00	15.00	2.00	1.350-1.480

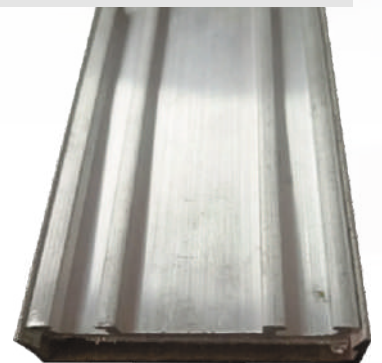
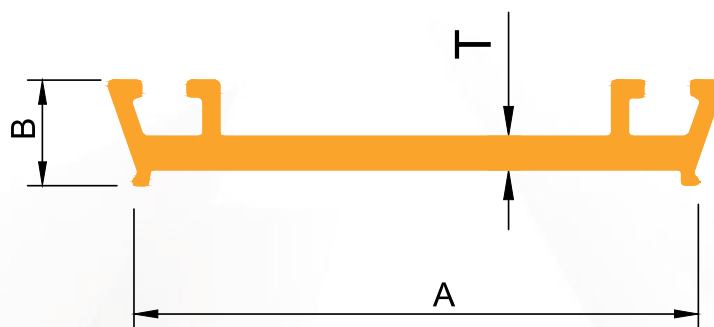


CURTAIN WALL



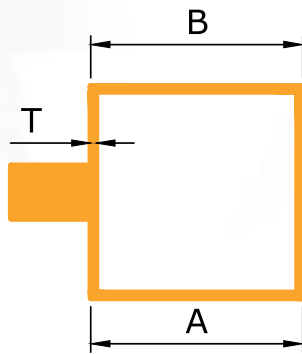
Sec No.	C/L	A	B	T	WT.RANGE KGs/12'
X	12.00	104.00	55.00	1.50	5.230-5.750

PRESSURE PLATE



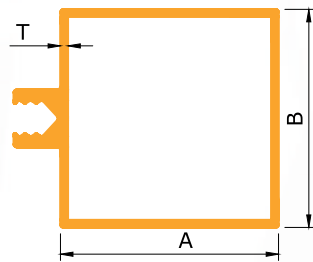
Sec No.	C/L	A	B	T	WT.RANGE KGs/12'
P100	12.00	50.00	09.50	3.00	1.930-2.120

CURTAIN WALL



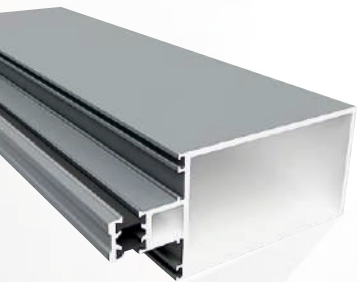
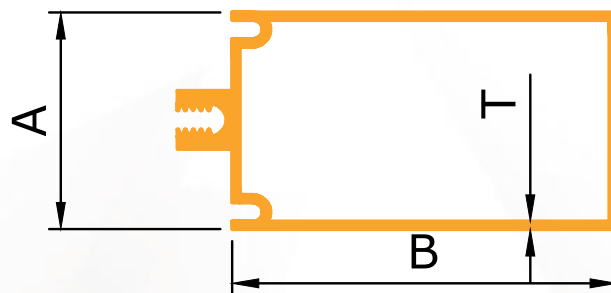
Sec No.	C/L	A	B	T	WT.RANGE KGs/12'
X160	12.00	50.0	50.0	1.00	2.00-2.20
X161	12.00	50.0	50.0	1.50	3.20-3.40
X162	12.00	115.0	57.0	2.00	8.00-8.40

CURTAIN WALL WITH GROOVE



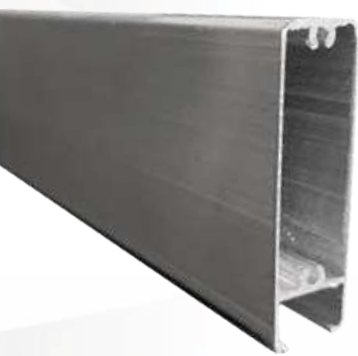
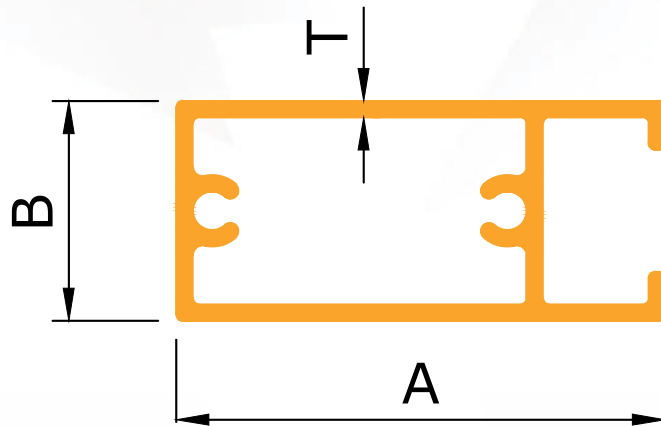
Sec No.	C/L	A	B	T	WT.RANGE KGs/12'
X166	12.00	50.0	50.0	1.00	2.00-2.50

CURTAIN WALL WITH GROOVE 1 NEW



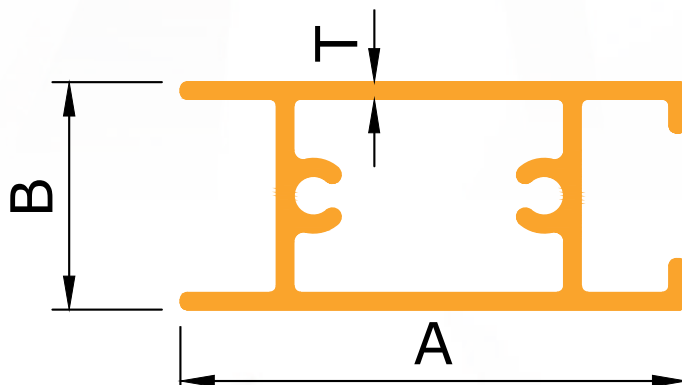
Sec No.	C/L	A	B	T	WT.RANGE KGs/12'
X168	12.00	58.0	101.0	2.18	8.00-8.10

HANDLE



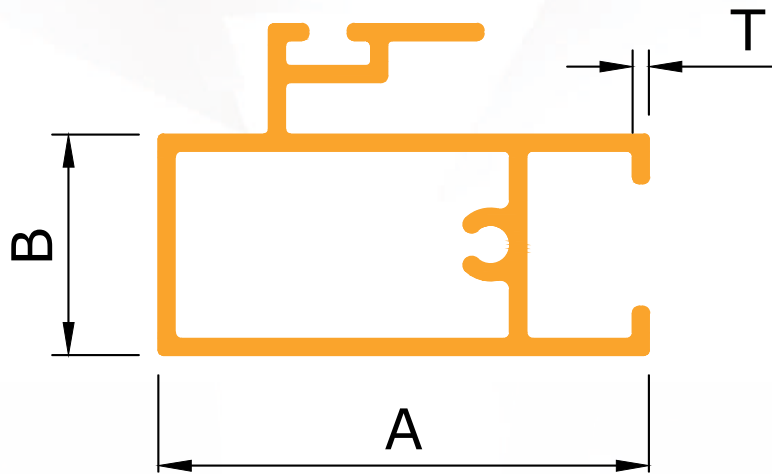
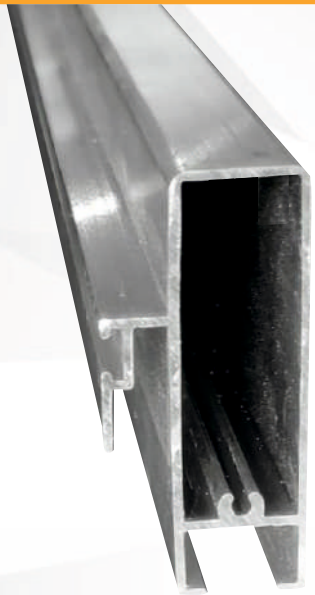
Sec No.	C/L	A	B	T	WT.RANGE KGs/12'
X500	12.00	40.00	18.00	0.70	0.900-1.100
X501	12.00	40.00	18.00	1.00	1.200-1.400
X502	12.00	40.00	18.00	1.20	1.400-1.600
X503	12.00	40.00	18.00	1.50	1.900-2.200

TOP BOTTOM



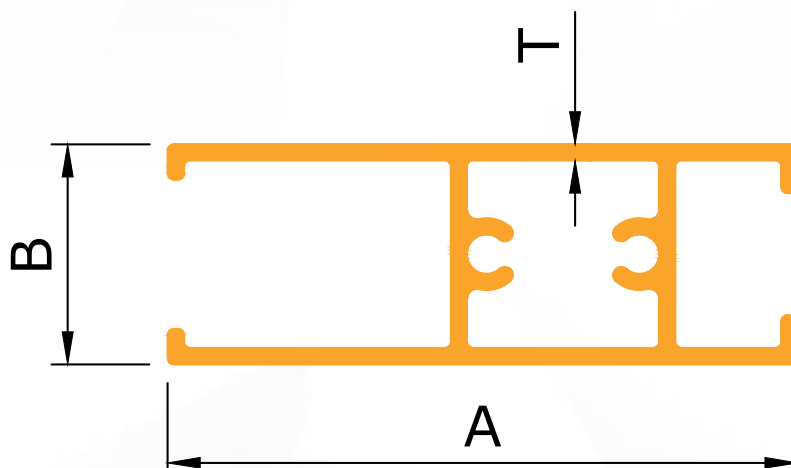
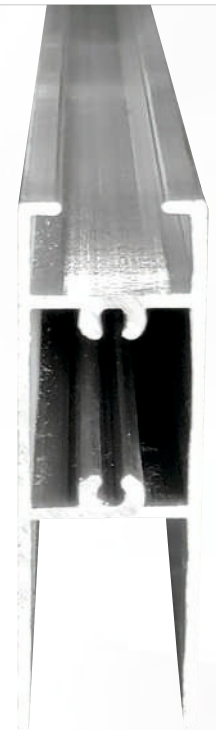
Sec No.	C/L	A	B	T	WT.RANGE KGs/12'
Z510	12.00	40.00	18.00	0.70	0.900-1.100
Z511	12.00	40.00	18.00	1.00	1.200-1.400
Z512	12.00	40.00	18.00	1.20	1.400-1.600
Z513	12.00	40.00	18.00	1.50	1.900-2.200

INTER LOCK



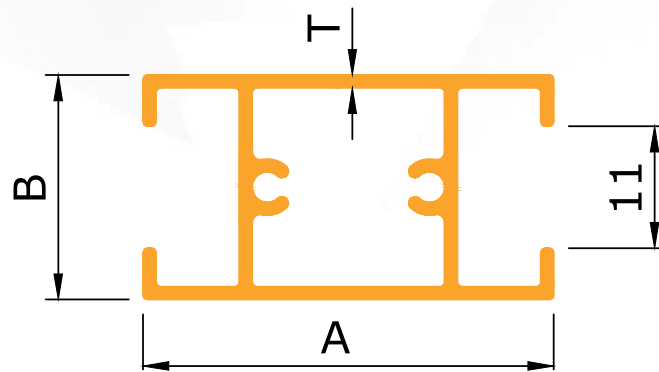
Sec No.	C/L	A	B	T	WT.RANGE KGs/12'
X520	12.00	40.00	18.00	0.70	1.100-1.300
X521	12.00	40.00	18.00	1.00	1.300-1.500
X522	12.00	40.00	18.00	1.20	1.700-1.900
X523	12.00	40.00	18.00	1.50	1.900-2.300

BEARING BOTTOM



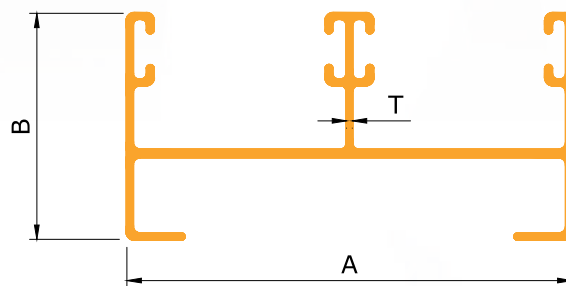
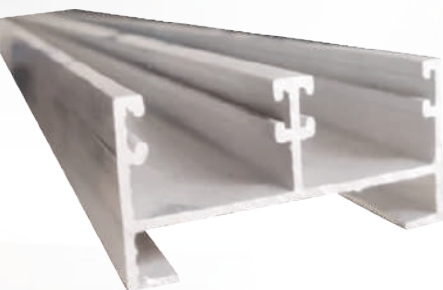
Sec No.	C/L	A	B	T	WT.RANGE KGs/12'
X530	12.00	51.00	18.00	0.70	1.00-1.300
X531	12.00	51.00	18.00	1.20	1.600-1.800

MATTING SECTION



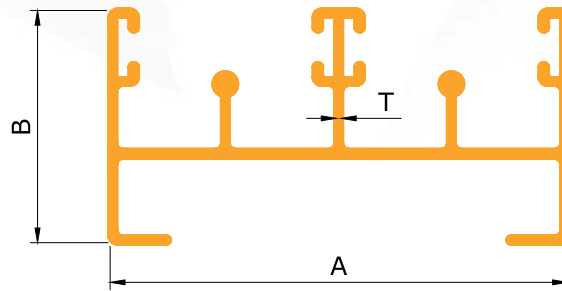
Sec No.	C/L	A	B	T	WT.RANGE KGs/12'
X310	12.00	75.00	25.00	1.00	1.90-2.10
X311	12.00	75.00	25.00	1.20	2.30-2.50
X312	12.00	75.00	25.00	1.50	2.90-3.20
X313	12.00	80.00	18.00	1.00	1.90-2.10
X314	12.00	80.00	18.00	1.20	2.30-2.50
X315	12.00	80.00	18.00	1.50	2.90-3.20.

TWO TRACK TOP



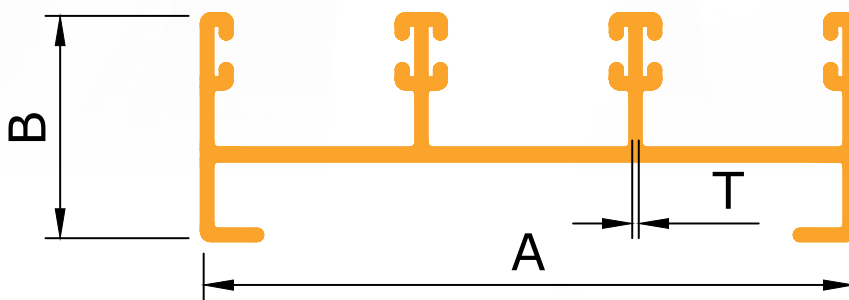
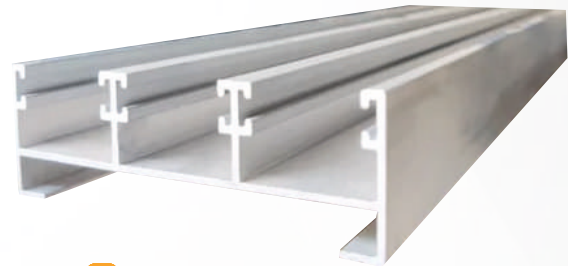
Sec No.	C/L	A	B	T	WT.RANGE KGs/12'
X550	12.00	62.00	32.00	0.75	1.400-1.600
X551	12.00	62.00	32.00	1.00	1.700-1.900
X552	12.00	62.00	32.00	1.20	2.300-2.500
X553	12.00	62.00	32.00	1.50	2.800-3.00

TWO TRACK BOTTOM



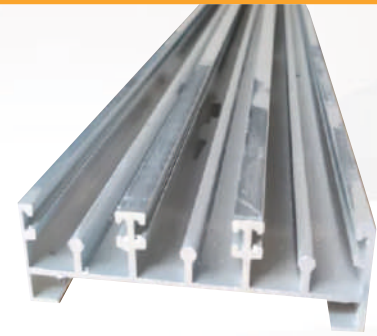
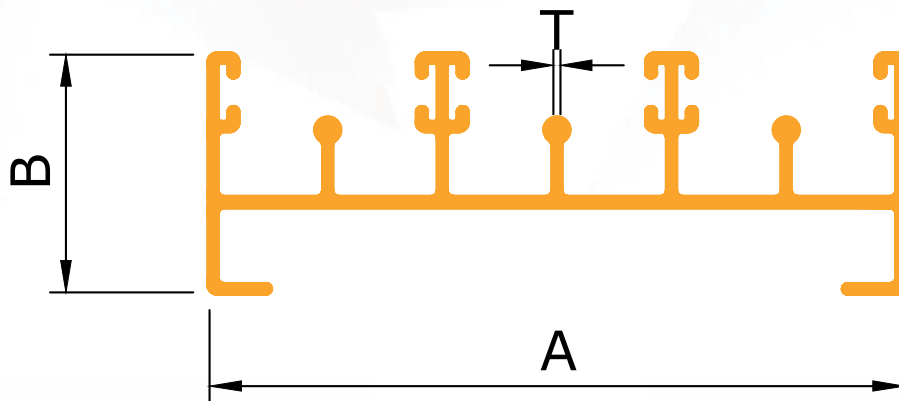
Sec No.	C/L	A	B	T	WT.RANGE KGs/12'
X560	12.00	62.00	32.00	0.75	1.500-1.700
X561	12.00	62.00	32.00	1.00	1.900-2.100
X562	12.00	62.00	32.00	1.20	2.400-2.600
X563	12.00	62.00	32.00	1.50	3.00-3.200

THREE TRACK TOP



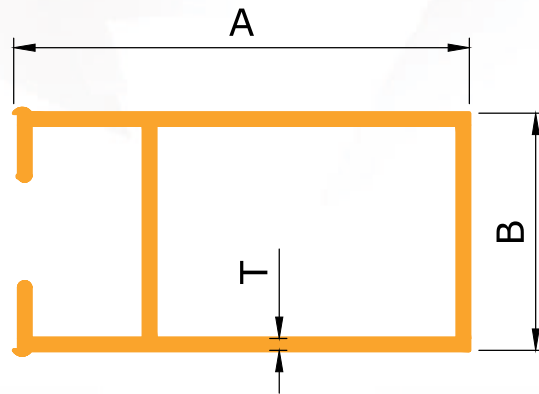
Sec No.	C/L	A	B	T	WT.RANGE KGs/12'
X570	12.00	92.00	32.00	0.80	2.100-2.300
X571	12.00	92.00	32.00	0.90	2.300-2.600
X572	12.00	92.00	32.00	1.00	2.700-2.900
X573	12.00	92.00	32.00	1.20	3.00-3.200
X574	12.00	92.00	32.00	1.50	3.800-4.00

THREE TRACK BOTTOM



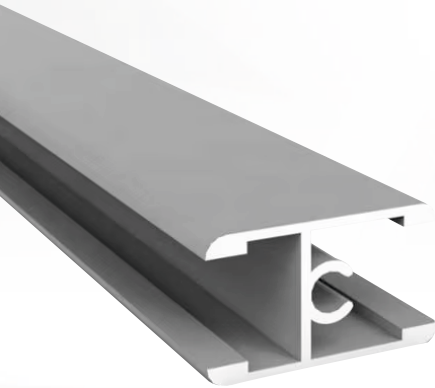
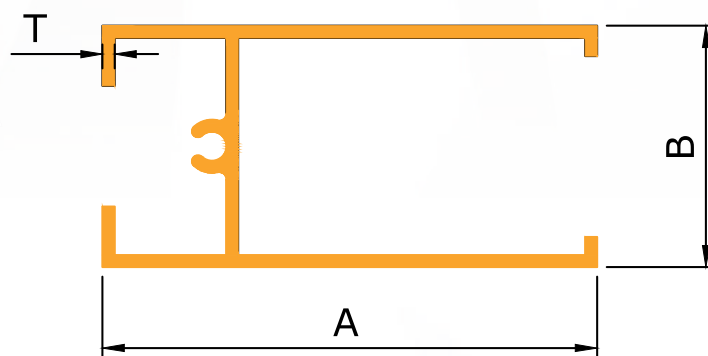
Sec No.	C/L	A	B	T	WT.RANGE KGs/12'
X580	12.00	92.00	32.00	0.80	2.300-2.500
X581	12.00	92.00	32.00	0.90	2.500-2.800
X582	12.00	92.00	32.00	1.00	2.800-3.00
X583	12.00	92.00	32.00	1.20	3.100-3.300
X584	12.00	92.00	32.00	1.50	4.100-4.400

HANDLE



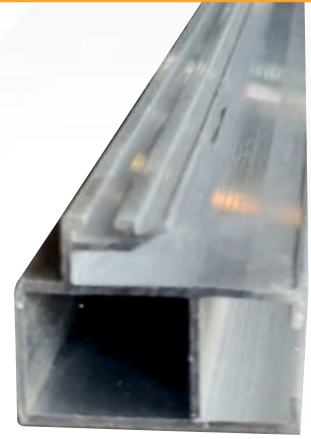
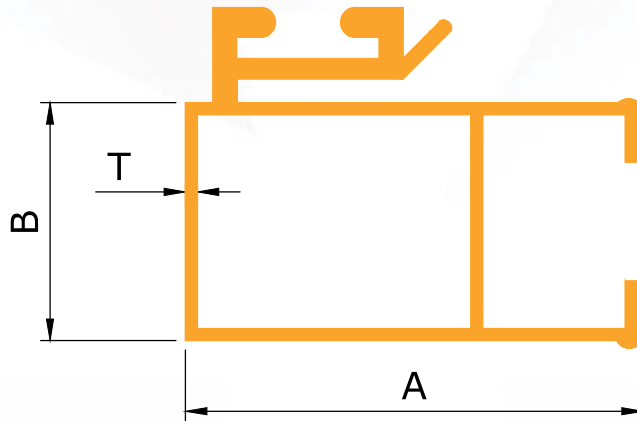
Sec No.	C/L	A	B	T	WT.RANGE KGs/12'
X600	12.00	38.00	20.00	0.80	0.900-1.100
X601	12.00	38.00	20.00	1.00	1.200-1.400
X602	12.00	38.00	20.00	1.20	1.400-1.600
X603	12.00	38.00	20.00	1.50	1.900-2.200

TOP BOTTOM

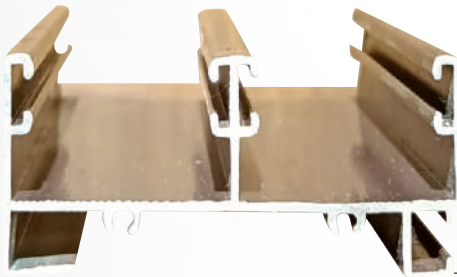


Sec No.	C/L	A	B	T	WT.RANGE KGs/12'
X610	12.00	41.00	20.00	0.70	0.900-1.100
X611	12.00	41.00	20.00	1.00	1.200-1.400
X612	12.00	41.00	20.00	1.20	1.400-1.600
X613	12.00	41.00	20.00	1.50	1.900-2.200

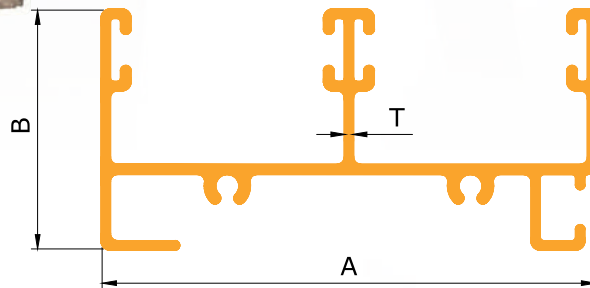
INTER LOCK



Sec No.	C/L	A	B	T	WT.RANGE KGs/12'
X620	12.00	38.00	20.00	0.70	1.100-1.300
X621	12.00	38.00	20.00	1.00	1.300-1.500
X622	12.00	38.00	20.00	1.20	1.700-1.900
X623	12.00	38.00	20.00	1.50	1.900-2.300

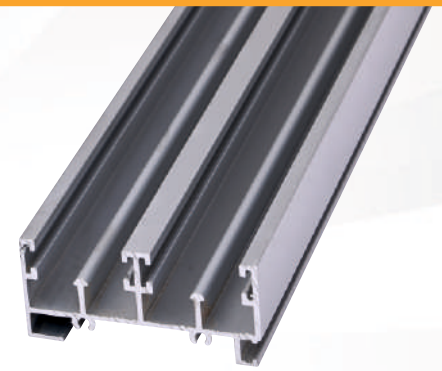
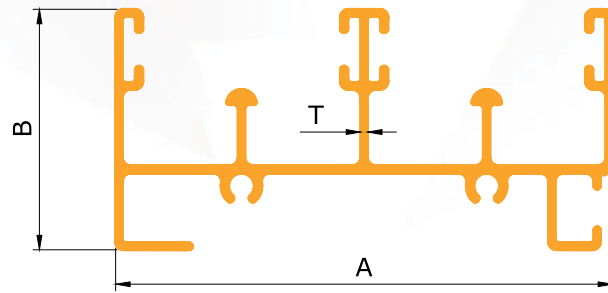


TWO TRACK TOP



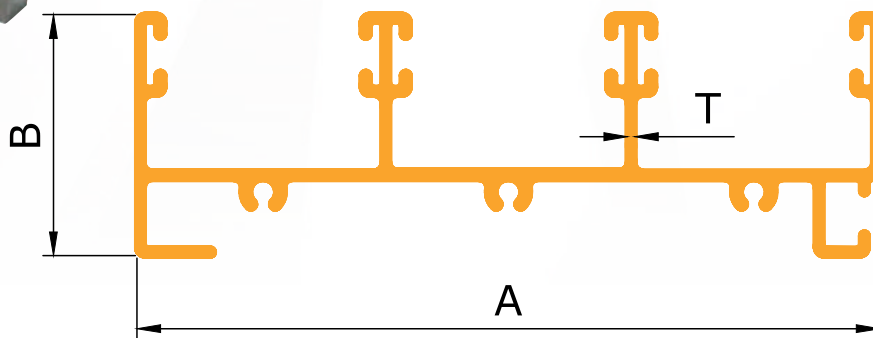
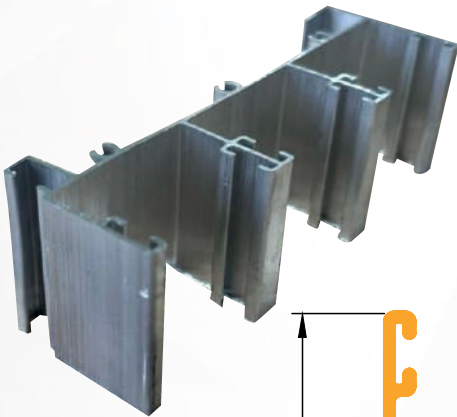
Sec No.	C/L	A	B	T	WT.RANGE KGs/12'
X630	12.00	62.00	20.00	0.75	1.400-1.600
X631	12.00	62.00	20.00	1.00	1.700-1.900
X632	12.00	62.00	20.00	1.20	2.300-2.500
X633	12.00	62.00	20.00	1.50	2.800-3.000

TWO TRACK BOTTOM



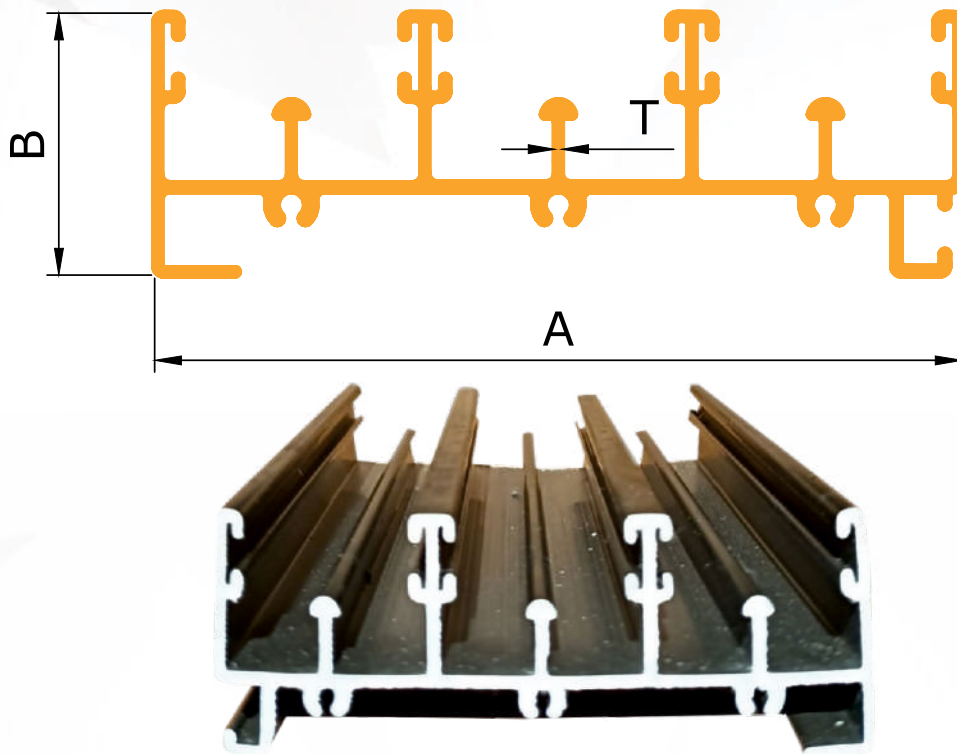
Sec No.	C/L	A	B	T	WT.RANGE KGs/12'
X640	12.00	62.00	32.00	0.80	1.600-1.880
X641	12.00	62.00	32.00	1.00	1.900-2.100
X642	12.00	62.00	32.00	1.20	2.400-2.600
X643	12.00	62.00	32.00	1.50	3.00-3.200

THREE TRACK TOP



Sec No.	C/L	A	B	T	WT.RANGE KGs/12'
X650	12.00	92.00	32.00	0.80	2.100-2.300
X651	12.00	92.00	32.00	0.90	2.300-2.600
X652	12.00	92.00	32.00	1.00	2.700-2.900
X653	12.00	92.00	32.00	1.20	3.00-3.200
X654	12.00	92.00	32.00	1.50	3.800-4.00

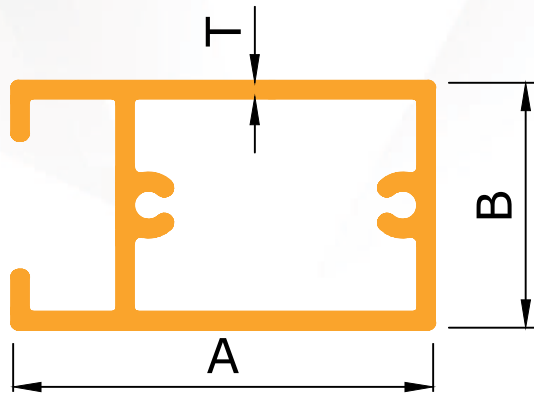
THREE TRACK BOTTOM



Sec No.	C/L	A	B	T	WT.RANGE KGs/12'
X660	12.00	62.00	32.00	0.80	2.300-2.500
X661	12.00	62.00	32.00	0.90	2.500-2.800
X662	12.00	62.00	32.00	1.00	2.800-3.00
X663	12.00	62.00	32.00	1.20	3.100-3.300
X664	12.00	62.00	32.00	1.50	4.100-4.400

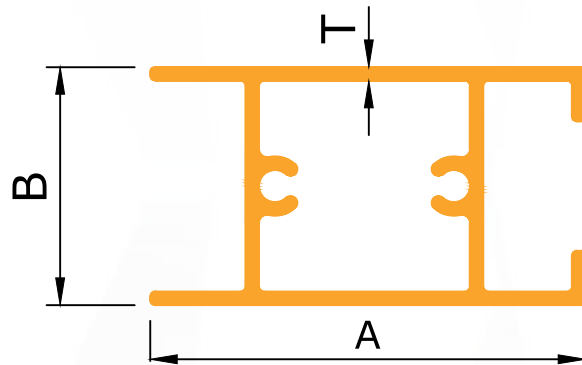


HANDLE SECTION



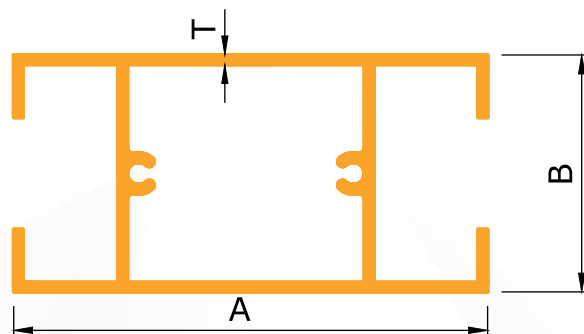
Sec No.	C/L	A	B	T	WT.RANGE KGs/12'
X800	12.00	50.00	25.00	0.80	1.200-1.400
X801	12.00	50.00	25.00	1.00	1.50-1.70

TOP BOTTOM



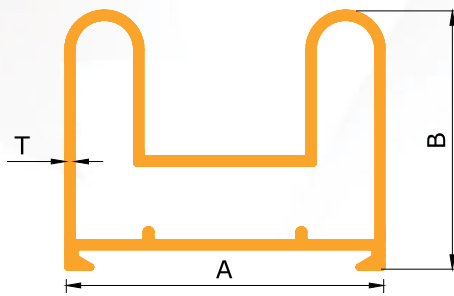
Sec No.	C/L	A	B	T	WT.RANGE KGs/12'
X810	12.00	50.00	25.00	0.70	1.200-1.480
X811	12.00	50.00	25.00	1.00	1.50-1.70

MIDDLE



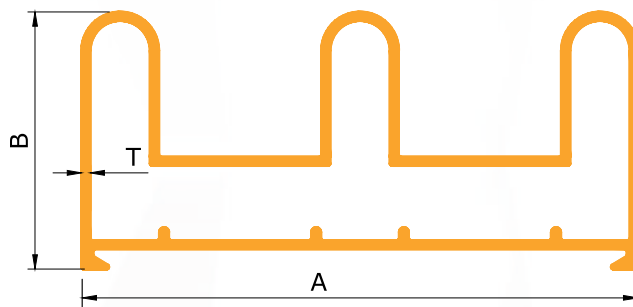
Sec No.	C/L	A	B	T	WT.RANGE KGs/12'
X820	12.00	50.00	25.00	0.70	1.200-1.480
X821	12.00	50.00	25.00	1.00	1.50-1.70

2201



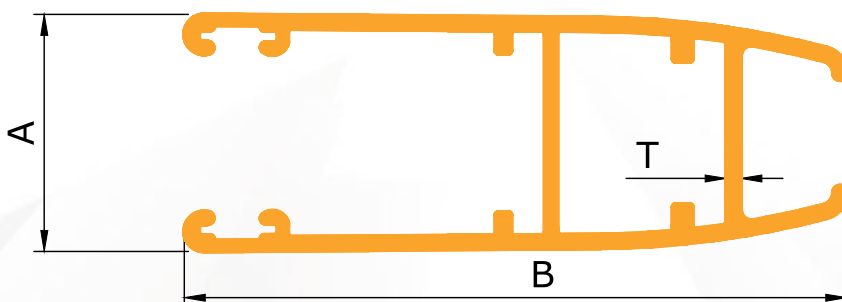
Sec No.	C/L	A	B	T	WT.RANGE KGs/12'
X223	12.00	44.00	36.00	1.40	2.350-2.580

2202



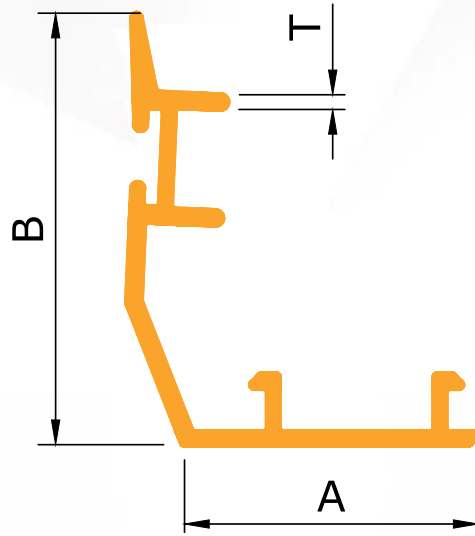
Sec No.	C/L	A	B	T	WT.RANGE KGs/12'
X222	12.00	77.00	36.00	1.40	3.620-3.980

2203



Sec No.	C/L	A	B	T	WT.RANGE KGs/12'
X220	12.00	22.00	63.00	1.40	2.410-2.650

2204

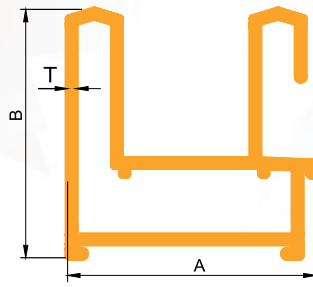


Sec No.	C/L	A	B	T	WT.RANGE KGs/12'
X221	12.00	24.00	35.00	1.40	0.970-1.070

Euro Series

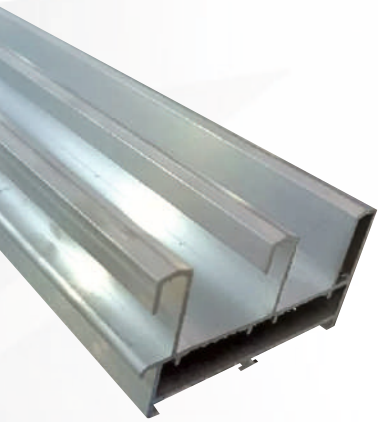
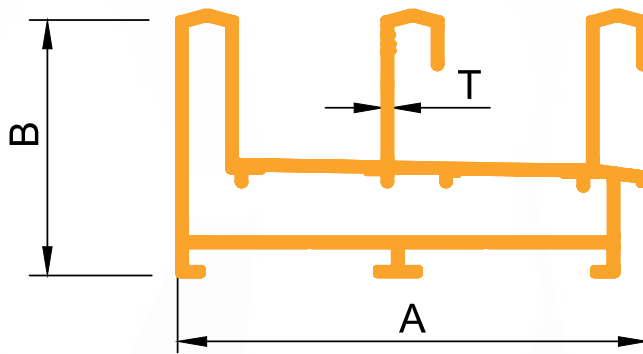
27 MM Window Series

2701



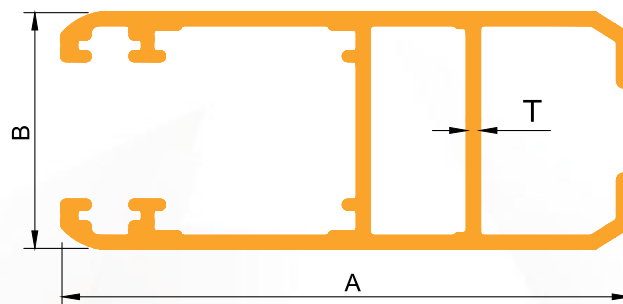
Sec No.	C/L	A	B	T	WT.RANGE KGs/12'
X274	12.00	45.00	45.20	1.60	3.340-3.350

2702



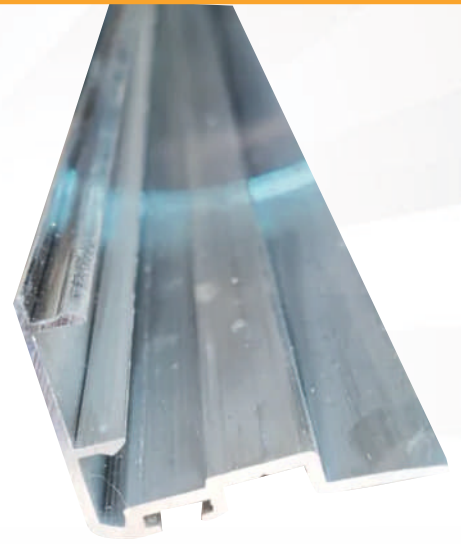
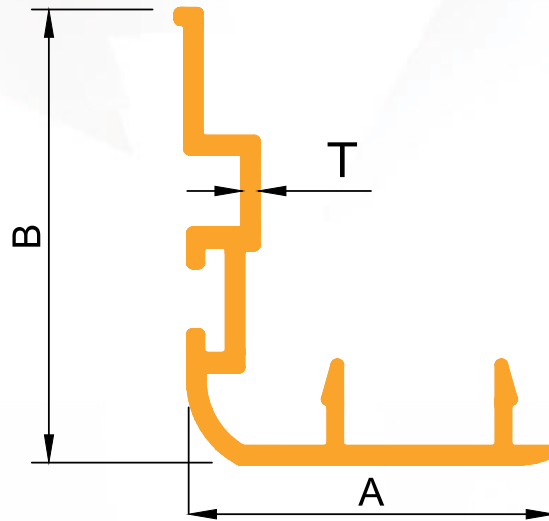
Sec No.	C/L	A	B	T	WT.RANGE KGs/12'
X276	12.00	80.00	45.00	1.45	4.990-5.090

2703



Sec No.	C/L	A	B	T	WT.RANGE KGs/12'
C272	12.00	65.00	27.00	1.40	3.050-3.150

2704

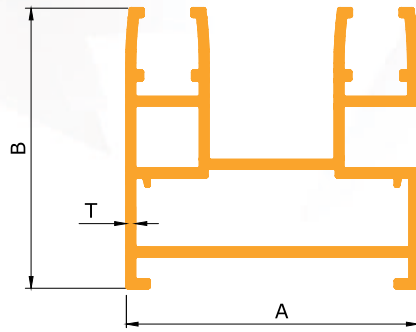


Sec No.	C/L	A	B	T	WT.RANGE KGs/12'
X275	12.00	26.00	32.00	1.10	3.430-3.530

Euro Series

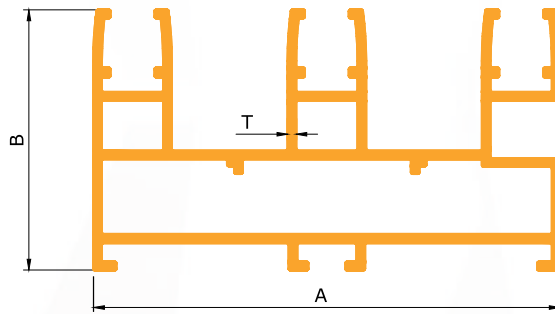
29 MM Window Series

2901



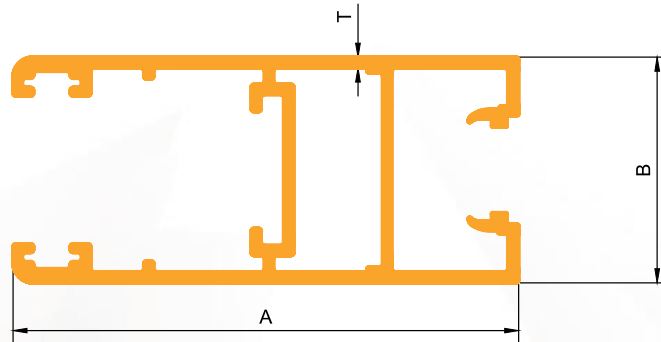
Sec No.	C/L	A	B	T	WT.RANGE KGs/12'
X291	12.00	50.00	48.00	1.40	4.100-4.510

2902



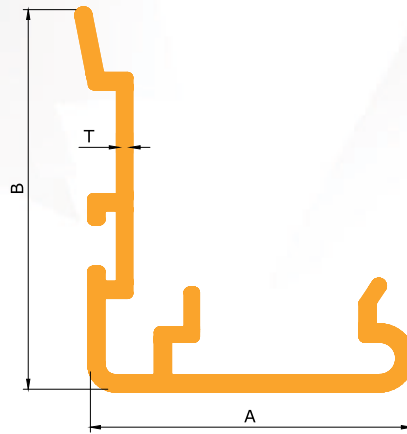
Sec No.	C/L	A	B	T	WT.RANGE KGs/12'
X290	12.00	86.00	48.00	1.40	6.500-7.200

2903



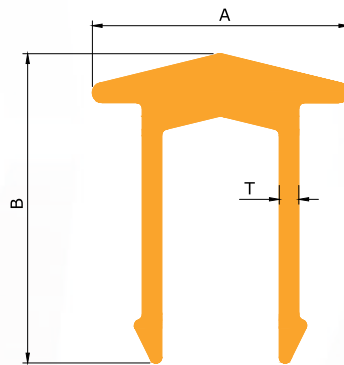
Sec No.	C/L	A	B	T	WT.RANGE KGs/12'
X295	12.00	65.00	29.00	1.40	3.310-3.410

2904



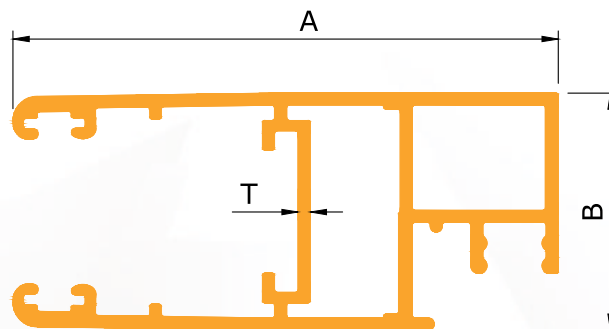
Sec No.	C/L	A	B	T	WT.RANGE KGs/12'
X293	12.00	32.00	38.00	1.40	1.190-1.300

2905



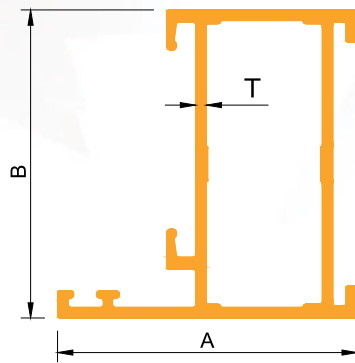
Sec No.	C/L	A	B	T	WT.RANGE KGs/12'
X294	12.00	13.00	15.00	1.40	0.550-0.600

2906



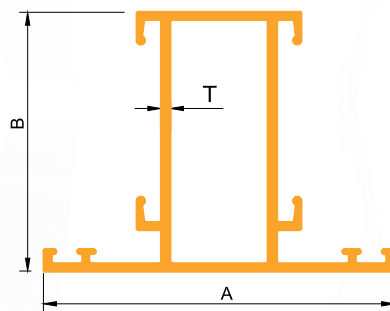
Sec No.	C/L	A	B	T	WT.RANGE KGs/12'
X292	12.00	52.00	29.00	1.40	3.840-4.220

X751



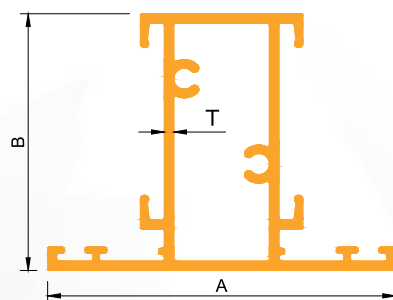
Sec No.	C/L	A	B	T	WT.RANGE KGs/12'
X751	12.00	39.30	40.40	1.40	2.300-3.400

X755



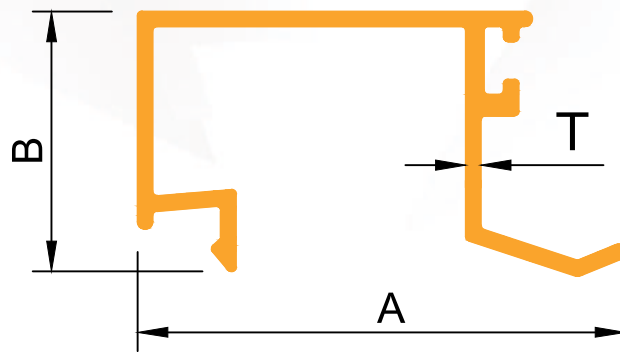
Sec No.	C/L	A	B	T	WT.RANGE KGs/12'
X755	12.00	54.30	40.20	1.30	2.540-2.640

X760



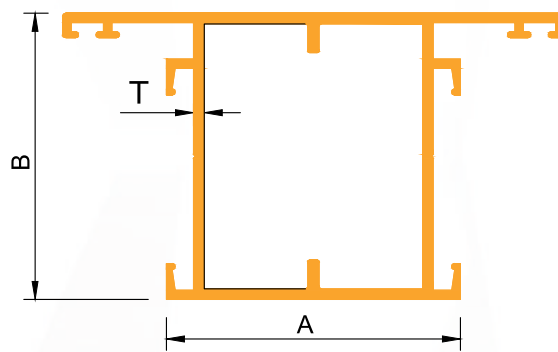
Sec No.	C/L	A	B	T	WT.RANGE KGs/12'
X760	12.00	54.60	40.30	1.50	3.000-3.100

X770



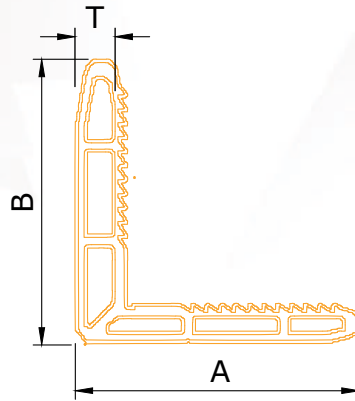
Sec No.	C/L	A	B	T	WT.RANGE KGs/12'
X770	12.00	32.3	17.20	1.00	0.790-0.890

X780



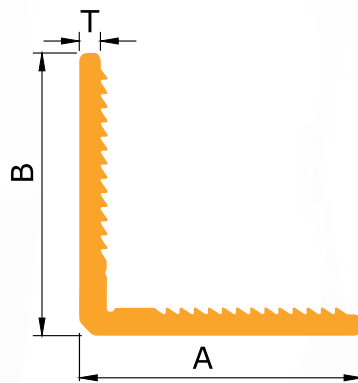
Sec No.	C/L	A	B	T	WT.RANGE KGs/12'
X780	12.00	61.00	60.00	2.25	0.867

CLIP 40X40



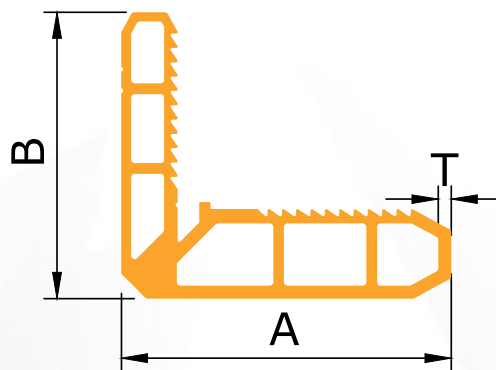
Sec No.	C/L	A	B	T	WT.RANGE KGs/12'
S008	12.00	40.00	40.00	1.3	2.530-2.630

40X40 CORNER CLIP (SOLID)



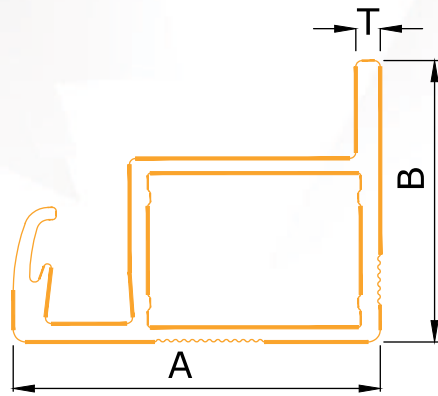
Sec No.	C/L	A	B	T	WT.RANGE KGs/12'
S003	12.00	40.00	40.00	3.9	2.644

40X40 CORNER CLIP (HOLLOW)



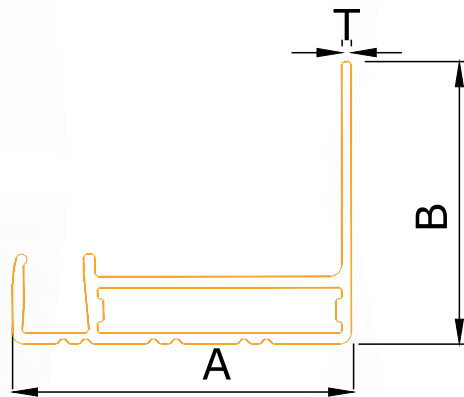
Sec No.	C/L	A	B	T	WT.RANGE KGs/12'
S002	12.00	46.00	40.00	1.3	3.350-3.450

FRAME 30X23



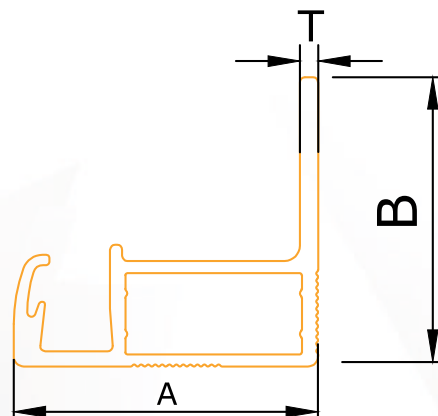
Sec No.	C/L	A	B	T	WT.RANGE KGs/12'
S007	12.00	30.00	23.00	2.00	1.340-1.470

FRAME 30X25



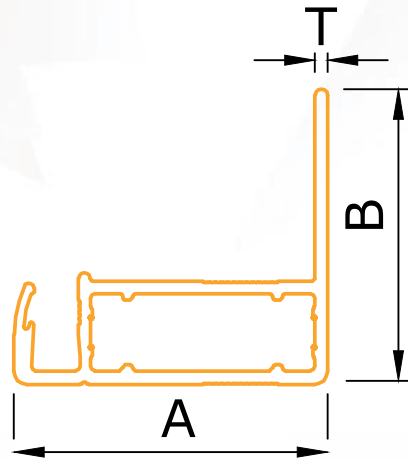
Sec No.	C/L	A	B	T	WT.RANGE KGs/12'
S006	12.00	30.00	25.00	0.85	0.842

FRAME 28.5X30



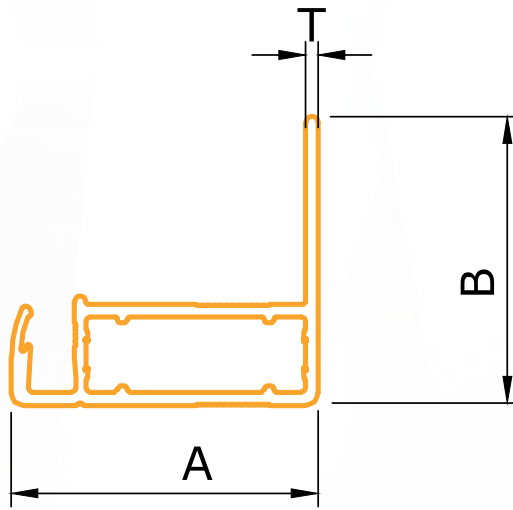
Sec No.	C/L	A	B	T	WT.RANGE KGs/12'
S001	12.00	30.00	28.05	1.8	1.380-1.520

FRAME 30X23



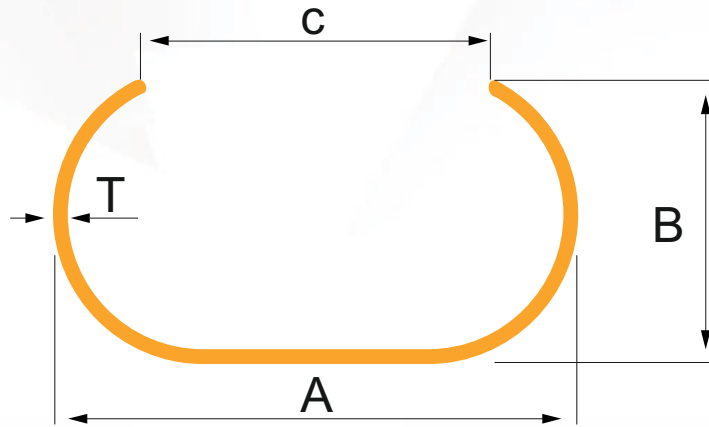
Sec No.	C/L	A	B	T	WT.RANGE KGs/12'
S005	12.00	35.00	23.00	1.20	1.200-1.320

FRAME 30X25



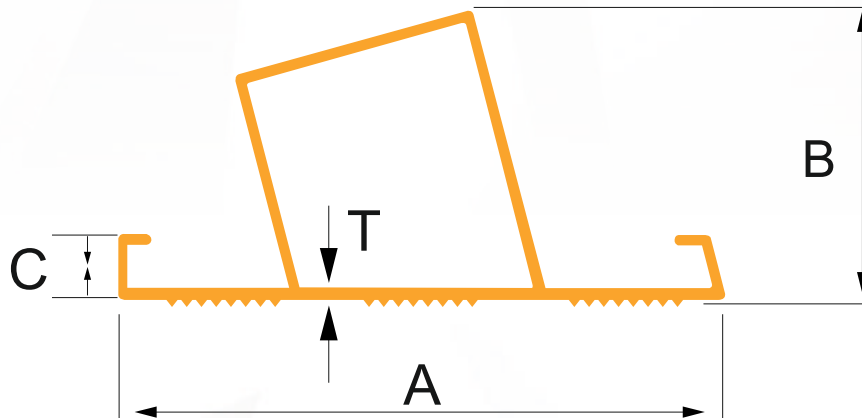
Sec No.	C/L	A	B	T	WT.RANGE KGs/12'
S004	12.00	35.00	33.00	1.40	1.600-1.760

C LADDER

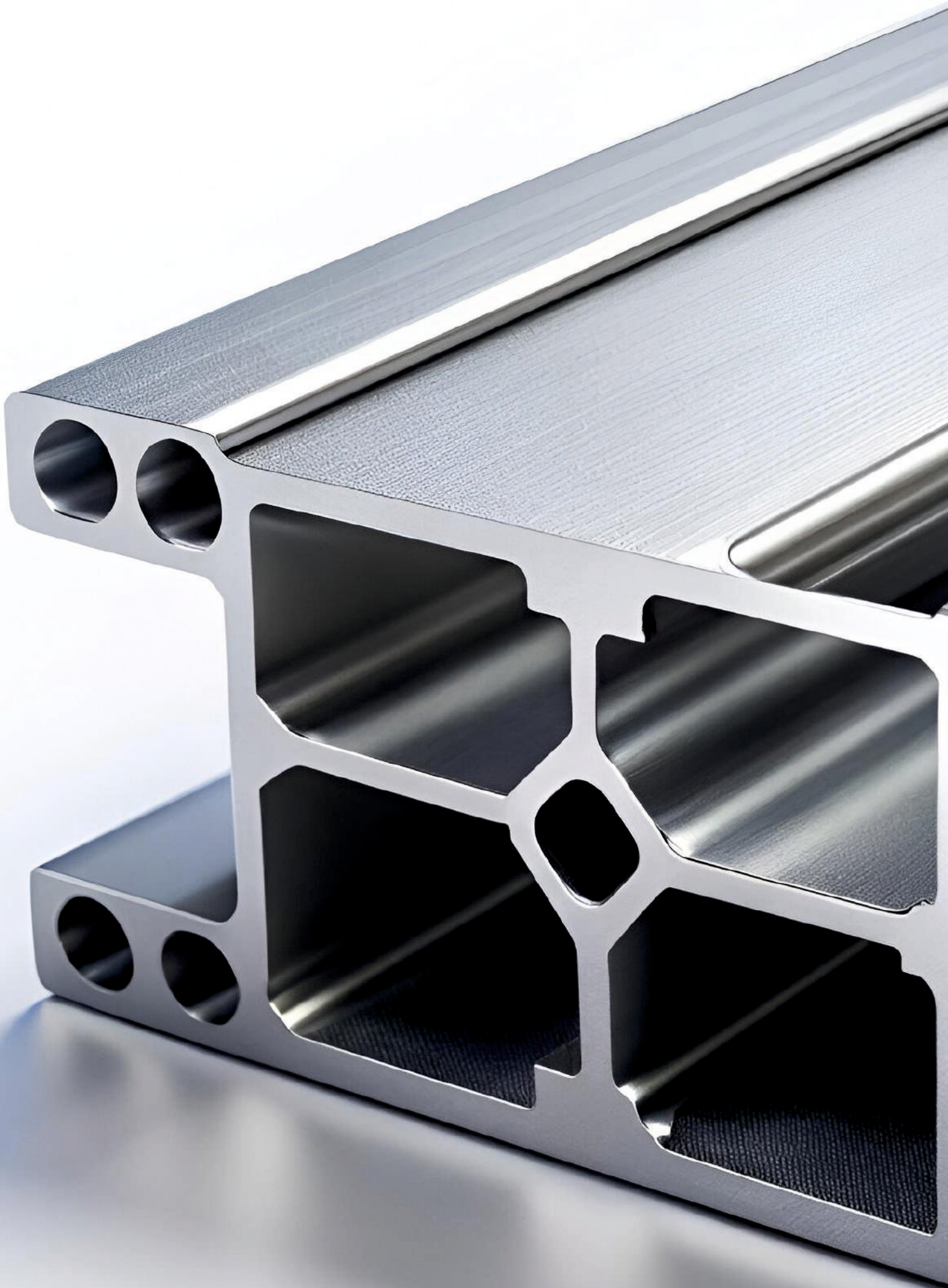


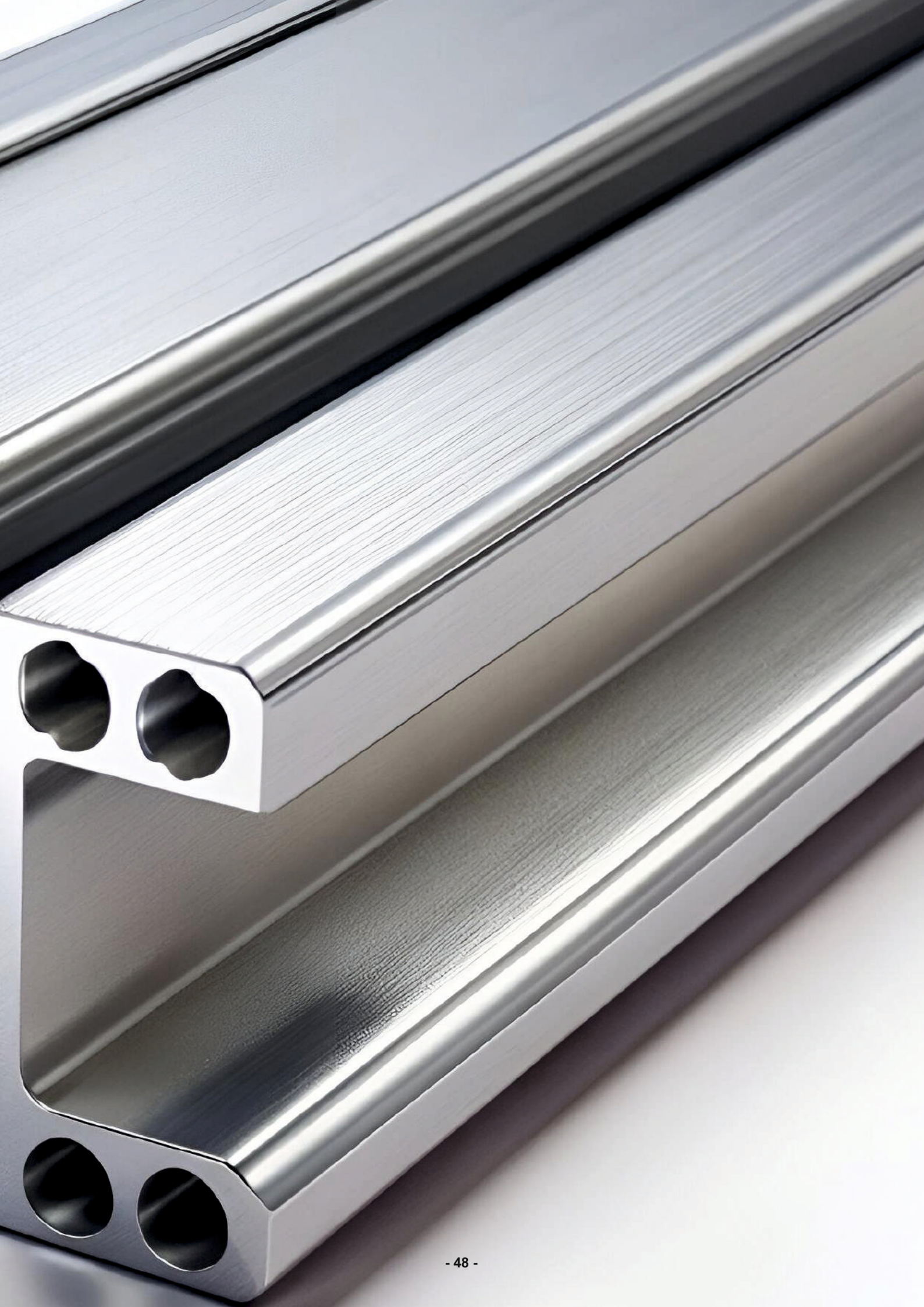
Sec No.	C/L	A	B	T	WT.RANGE KGs/12'
L101	12.00	66.00	32.00	1.50	1.80-1.95
L102	12.00	66.00	32.00	1.80	2.10-2.300
L103	12.00	66.00	32.00	2.00	2.40-2.600

STEP LADDER




Sec No.	C/L	A	B	T	WT.RANGE KGs/12'
L110	12.00	62.00	31.00	0.80	1.200-1.400
L112	12.00	62.00	31.00	1.00	1.50-1.70
L113	12.00	62.00	31.00	1.50	2.200-2.500








EXCELLENCE ENGIMAC PRIVATE LIMITED

 Plot No. 29, IDCO Industrial Estate, Chhatabar, Khordha, Odisha – 752054

 +91 75046 33300, 9938877800  excellence.odisha@gmail.com  www.in-ex.in